



# CASEMENT WINDOWS

Technical Guide B

# FEATURES & SPECIFICATIONS

## Styles

Traditional, Push Out and Mission® options.

## Standard Features

---

Natural, clear Douglas Fir interior (no visible finger joints)

---

4 9/16" (116 mm) jamb construction

---

LowE insulated glazing with 1/2" (13 mm) airspace

---

Roto gear operator and concealed sash locks

---

Extruded aluminum cladding in a variety of standard colors, primed wood or clear fir exterior

---

Flexible continuous weatherstrip system

---

Insect screens

---

Metal handle, cover and locks

---

## Hardware

Operator and sash locks are available in a variety of types and finishes, see section A. Standard Casement sash opens out to nearly 90 degrees for ease of cleaning. The roto gear operator will hold the sash at any position in its operating radius. The sash is supported by concealed heavy duty hinges. All steel components are coated for superior corrosion protection.

## Glazing

LowE Double, LowE Triple, Tranquility® and StormForce™. StormForce is not available on all products. Double or triple glass configurations with 1/2" (13 mm) airspace. With countless glazing configurations and LowE coating options, we ensure that you can choose the perfect blend of protection and comfort. LowE best describes the benefits of the product that incorporates glazing coatings and Argon gas. LowE systems help reduce heating and cooling costs, providing superior energy efficiency.



Traditional



Push Out Casement



Mission® Casement

# FEATURES & SPECIFICATIONS

## Simulated Divided Lites (SDL)

Standard SDL complete with airspace grilles, where available. Grille bars are permanently applied to the interior and exterior.

Ogee Profile – 3/4" (19 mm), 1 1/8" (30 mm), 2" (51 mm)

Putty Profile – 5/8" (16 mm), 7/8" (22 mm), 1 1/8" (30 mm), 2" (51 mm)

Square Profile (interior only) – 5/8" (16mm), 3/4" (19 mm), 7/8" (22 mm), 1 1/8" (30 mm), 2" (51 mm)

## Casing

Wood: 2" (51 mm) Brickmould, 3 1/2" (89 mm) Flat, 5 1/2" (139 mm) Flat, Adams and Williamsburg.

Metal Clad: 2" (51 mm) Brickmould, 3 1/2" (89 mm) Flat, 2" clad frame extension, Nose & Cove, Adams, Williamsburg and Kerf.

## Metal Cladding

Heavy duty exterior metal cladding comprised of extruded aluminum is available in a variety of Palette colors, including anodized and Cyprium (copper and bronze cladding). Metal clad units are supplied ready-to-install complete with integral metal nailing flange.

## Wood

In addition to our standard Coastal Douglas Fir, the entire Loewen product line is also available in optional Mahogany. The interior can be natural wood (unfinished), primed, or prefinished in Jet Black or Oxford White paint. Additional wood species, as well as the Jet Black and Oxford White prefinishes, are available through our Custom Shop. All wood parts are dipped in approved preservative.

## Performance Standards

Most units have been tested by an independent laboratory for air and water infiltration, structural performance, and thermal performance requirements.

## Frame & Sash

Manufactured from Coastal Douglas Fir kiln-dried lumber with frame construction designed for 4 9/16" (116 mm) jamb. All wood exterior components are factory primed unless specified as clear exterior. Minor scratches or abrasions in the wood surface or primer are not considered defects.

## Double Weatherstrip

The combination of a continuous, flexible foam weatherstrip and a flexible automotive type bulb weatherstrip ensures maximum energy efficiency and protection against air and water infiltration.

# FEATURES & SPECIFICATIONS

## Screen

Screens available in Alpine White, White, Linen, Tuscany Brown, Midnight Bronze, Steel Matte Black, Bronze, or Brushed Aluminum frame, screened with anti-glare fiberglass cloth. Wood-framed screens and High Transparency mesh available. Optional Retractable Screen and Swinging Screen available. Swinging Screen available on Push Out models only.

## Egress

Consult local building codes for confirmation of size requirements for your area. Special egress hardware is available for Casement windows, which enables some sizes to meet egress codes, eliminating the need to go to the next larger size window. Consult your Authorized Loewen Dealer for more details.

Visit the Loewen Photo Gallery online at [www.loewen.com](http://www.loewen.com) for a large collection of Loewen product and elevation photography.

Numerous custom window configuration opportunities exist – please contact your Authorized Loewen Dealer.

Specifications and technical information are subject to change without notice. Imperial and metric measurements are converted accurately. However, in some cases, industry standards cause a 1 mm variance. (Example: 3/4" is shown as 19 mm for all glass measurements.) CAD Download: [www.loewen.com/architect](http://www.loewen.com/architect) | Installation Instructions: [www.loewen.com](http://www.loewen.com)

Hardware Styles	Traditional Casement	Mission® Casement	French Casement	Push Out Casement
Folding Crank Handle	●	●		
Push Out Handle			●	●
Multipoint Lock	●	●	●	●

**Standard** ● **Optional** ○ Finish Options: Refer to Section A.

Variables	Traditional Casement	Mission® Casement	French Casement	Push Out Casement
<b>Function</b>				
Use for Egress	●	●	●	●
Available with Screen	●	●	●	●
Concealed Hardware	●	●	●	
<b>Performance</b>				
LowE Double	●	●	●	●
LowE Triple	○	○	○	○
StormForce™	○	○		○
<b>Appearance</b>				
SDL	○	○	○	○



### Casement 1 Wide Window Sizes

Width

Height

Rough Opening				16 1/2 [419]	20 7/16 [519]	24 3/8 [619]	28 5/16 [719]	30 1/4 [769]	32 1/4 [819]	36 3/16 [919]
Wood Exterior	Metal Clad	Frame		15 3/4 [400]	19 11/16 [500]	23 5/8 [600]	27 9/16 [700]	29 1/2 [750]	31 1/2 [800]	35 7/16 [900]
		Visible Glass		9 3/4 [247]	13 11/16 [347]	17 5/8 [447]	21 9/16 [547]	23 1/2 [597]	25 1/2 [647]	29 7/16 [747]
25 1/16 [636]	24 3/8 [619]	23 5/8 [600]	17 3/8 [442]	CA1 0406	CA1 0506	CA1 0606	CA1 0706	CA1 7506		
29 [736]	28 5/16 [719]	27 9/16 [700]	21 5/16 [542]	CA1 0407	CA1 0507	CA1 0607	CA1 0707	CA1 7507	★ CA1 0807	
30 15/16 [786]	30 1/4 [769]	29 1/2 [750]	23 5/16 [592]	CA1 0475	CA1 0575	CA1 0675	CA1 0775	★ CA1 7575	★ CA1 0875	
32 15/16 [836]	32 1/4 [819]	31 1/2 [800]	25 1/4 [642]	CA1 0408	CA1 0508	CA1 0608	★ CA1 0708	★ CA1 7508	★ CA1 0808	★ CA1 0908
36 7/8 [936]	36 3/16 [919]	35 7/16 [900]	29 3/16 [742]	CA1 0409	CA1 0509	CA1 0609	★ CA1 0709	★ CA1 7509	★ CA1 0809	★★ CA1 0909
40 13/16 [1036]	40 1/8 [1019]	39 3/8 [1000]	33 1/8 [842]	CA1 0410	CA1 0510	★ CA1 0610	★ CA1 0710	★ CA1 7510	★★ CA1 0810	★★ CA1 0910
42 11/16 [1084]	42 [1067]	41 1/4 [1048]	35 1/16 [890]	CA1 0411	CA1 0511	★ CA1 0611	★ CA1 0711	★★ CA1 7511	★★ CA1 0811	★★ CA1 0911
48 11/16 [1236]	48 [1219]	47 1/4 [1200]	41 [1042]	CA1 0412	CA1 0512	★ CA1 0612	★★ CA1 0712	★★ CA1 7512	★★ CA1 0812	★★ CA1 0912
56 9/16 [1436]	55 7/8 [1419]	55 1/8 [1400]	48 7/8 [1242]	CA1 0414	CA1 0514	★ CA1 0614	★★ CA1 0714	★★ CA1 7514	★★ CA1 0814	★★ CA1 0914
60 1/2 [1536]	59 13/16 [1519]	59 1/16 [1500]	52 13/16 [1342]	CA1 0415	CA1 0515	★ CA1 0615	★★ CA1 0715	★★ CA1 7515	★★ CA1 0815	★★ CA1 0915
64 7/16 [1636]	63 3/4 [1619]	63 [1600]	56 3/4 [1442]	CA1 0416	CA1 0516	★ CA1 0616	★★ CA1 0716	★★ CA1 7516	★★ CA1 0816	★★ CA1 0916
72 5/16 [1836]	71 5/8 [1819]	70 7/8 [1800]	64 5/8 [1642]	CA1 0418	CA1 0518	★ CA1 0618	★★ CA1 0718	★★ CA1 7518	★★ CA1 0818	★★ CA1 0918
84 1/8 [2136]	83 7/16 [2119]	82 11/16 [2100]	76 7/16 [1942]	CA1 0421	CA1 0521	★ CA1 0621	★★ CA1 0721	★★ CA1 7521	★★ CA1 0821	★★ CA1 0921

New oversized CA operator up to CA1 1224

- watch for sizes where temp, tri sash, sash stabilizer etc. are read
- roto only
- rectangular

Product Code

Glass Size = Visible Glass + 15/16" (24 mm)

**Standard sizes Shown. Additional sizes may be available. Custom sizes can be ordered.**

- Note:**
- Available with Mission sash. For a unit with a Mission sash, subtract 13/16" (21 mm) from the vertical visible glass measurement.
  - SDL/Grille patterns are dependent on SDL/Grille type and window size. Please verify SDL/Grille patterns before confirming your order.
  - Available with Push Out hardware.
  - For Masonry opening information see page Section A.
  - Sizes are shown as double glazing, not all sizes may be available in triple glazing.
  - Egress calculations are based on a 20" width opening. Opening does not open a full 90°.
    - ★ Meets US Egress: 20" in width, 24" in height, with a total egress area of 5.7 Sq Ft.
    - ♣ Meets Canadian Egress: 15" in width, 15" in height, with a total egress area of 3.8 Sq Ft.
  - Please check your local building codes for any variation in Egress Standards from those stated above. For egress information, contact your Authorized Loewen Dealer.

## Casement 2 Wide Window Sizes

Width

Height

Rough Opening				32 1/4 [819]	40 1/8 [1019]	48 [1219]	55 7/8 [1419]	59 13/16 [1519]	63 3/4 [1619]	71 5/8 [1819]
Wood Exterior	Metal Clad	Frame	Visible Glass							
				9 3/4 [247]	13 11/16 [347]	17 5/8 [447]	21 9/16 [547]	23 1/2 [597]	25 1/2 [647]	29 7/16 [747]
25 1/16 [636]	24 3/8 [619]	23 5/8 [600]	17 3/8 [442]	CA2 0806	CA2 1006	CA2 1206	CA2 1406	CA2 1506		
29 [736]	28 5/16 [719]	27 9/16 [700]	21 5/16 [542]	CA2 0807	CA2 1007	CA2 1207	CA2 1407	CA2 1507	CA2 1607	
30 15/16 [786]	30 1/4 [769]	29 1/2 [750]	23 5/16 [592]	CA2 0875	CA2 1075	CA2 1275	CA2 1475	CA2 1575	CA2 1675	
32 15/16 [836]	32 1/4 [819]	31 1/2 [800]	25 1/4 [642]	CA2 0808	CA2 1008	CA2 1208	CA2 1408	CA2 1508	CA2 1608	CA2 1808
36 7/8 [936]	36 3/16 [919]	35 7/16 [900]	29 3/16 [742]	CA2 0809	CA2 1009	CA2 1209	CA2 1409	CA2 1509	CA2 1609	CA2 1809
40 13/16 [1036]	40 1/8 [1019]	39 3/8 [1000]	33 1/8 [842]	CA2 0810	CA2 1010	CA2 1210	CA2 1410	CA2 1510	CA2 1610	CA2 1810
42 11/16 [1084]	42 [1067]	41 1/4 [1048]	35 1/16 [890]	CA2 0811	CA2 1011	CA2 1211	CA2 1411	CA2 1511	CA2 1611	CA2 1811
48 11/16 [1236]	48 [1219]	47 1/4 [1200]	41 [1042]	CA2 0812	CA2 1012	CA2 1212	CA2 1412	CA2 1512	CA2 1612	CA2 1812
56 9/16 [1436]	55 7/8 [1419]	55 1/8 [1400]	48 7/8 [1242]	CA2 0814	CA2 1014	CA2 1214	CA2 1414	CA2 1514	CA2 1614	CA2 1814
60 1/2 [1536]	59 13/16 [1519]	59 1/16 [1500]	52 13/16 [1342]	CA2 0815	CA2 1015	CA2 1215	CA2 1415	CA2 1515	CA2 1615	CA2 1815
64 7/16 [1636]	63 3/4 [1619]	63 [1600]	56 3/4 [1442]	CA2 0816	CA2 1016	CA2 1216	CA2 1416	CA2 1516	CA2 1616	CA2 1816
72 5/16 [1836]	71 5/8 [1819]	70 7/8 [1800]	64 5/8 [1642]	CA2 0818	CA2 1018	CA2 1218	CA2 1418	CA2 1518	CA2 1618	CA2 1818
84 1/8 [2136]	83 7/16 [2119]	82 11/16 [2100]	76 7/16 [1942]	CA2 0821	CA2 1021	CA2 1221	CA2 1421	CA2 1521	CA2 1621	CA2 1821

Product Code

Glass Size = Visible Glass + 15/16" (24 mm)

**Standard sizes Shown. Additional sizes may be available. Custom sizes can be ordered.**

- Note:**
- Available with Mission sash. For a unit with a Mission sash, subtract 13/16" (21 mm) from the vertical visible glass measurement.
  - SDL/Grille patterns are dependent on SDL/Grille type and window size. Please verify SDL/Grille patterns before confirming your order.
  - Available with Push Out hardware.
  - For Masonry opening information see page Section A.
  - Sizes are shown as double glazing, not all sizes may be available in triple glazing.

- Egress calculations are based on a 20" width opening. Opening does not open a full 90°.
  - ★ Meets US Egress: 20" in width, 24" in height, with a total egress area of 5.7 Sq Ft.
  - ♣ Meets Canadian Egress: 15" in width, 15" in height, with a total egress area of 3.8 Sq Ft.
- Please check your local building codes for any variation in Egress Standards from those stated above. For egress information, contact your Authorized Loewen Dealer.

### Fixed Casement Window Sizes

Width

Rough Opening		Width												
		Frame		12	16 1/2	20	24	28	30 1/4	32 1/4	36	40	42	48
				9/16 [319]	[419]	7/16 [519]	3/8 [619]	5/16 [719]	1/4 [769]	1/4 [819]	3/16 [919]	1/8 [1019]	[1067]	[1219]
Wood Exterior	Metal Clad	Frame		11	15 3/4	19	23	27	29	31 1/2	35	39	41 1/4	47 1/4
		Visible Glass	5	9 3/4	13	17 5/8	21	23	25	29	33	35 1/4	41 1/4	
				13/16 [300]	[400]	11/16 [500]	5/8 [600]	9/16 [700]	1/2 [750]	1/2 [800]	7/16 [900]	3/8 [1000]	[1048]	[1200]
				13/16 [147]	[247]	11/16 [347]	5/8 [447]	9/16 [547]	1/2 [597]	1/2 [647]	7/16 [747]	3/8 [847]	[895]	[1047]
13 1/4 [336]	12 9/16 [319]	11 13/16 [300]	5 9/16 [142]	CA1 0303	CA1 0403	CA1 0503	CA1 0603	CA1 0703	CA1 7503	CA1 0803	CA1 0903	CA1 1003	CA1 1103	CA1 1203
17 3/16 [436]	16 1/2 [419]	15 3/4 [400]	9 1/2 [242]	CA1 0304	CA1 0404	CA1 0504	CA1 0604	CA1 0704	CA1 7504	CA1 0804	CA1 0904	CA1 1004	CA1 1104	CA1 1204
21 1/8 [536]	20 7/16 [519]	19 11/16 [500]	13 7/16 [342]	CA1 0305	CA1 0405	CA1 0505	CA1 0605	CA1 0705	CA1 7505	CA1 0805	CA1 0905	CA1 1005	CA1 1105	CA1 1205
25 1/16 [636]	24 3/8 [619]	23 5/8 [600]	17 3/8 [442]	CA1 0306	CA1 0406	CA1 0506	CA1 0606	CA1 0706	CA1 7506	CA1 0806	CA1 0906	CA1 1006	CA1 1106	CA1 1206
29 [736]	28 5/16 [719]	27 9/16 [700]	21 5/16 [542]	CA1 0307	CA1 0407	CA1 0507	CA1 0607	CA1 0707	CA1 7507	CA1 0807	CA1 0907	CA1 1007	CA1 1107	CA1 1207
30 15/16 [786]	30 1/4 [769]	29 1/2 [750]	23 5/16 [592]	CA1 0375	CA1 0475	CA1 0575	CA1 0675	CA1 0775	CA1 7575	CA1 0875	CA1 0975	CA1 1075	CA1 1175	CA1 1275
32 15/16 [836]	32 1/4 [819]	31 1/2 [800]	25 1/4 [642]	CA1 0308	CA1 0408	CA1 0508	CA1 0608	CA1 0708	CA1 7508	CA1 0808	CA1 0908	CA1 1008	CA1 1108	CA1 1208
36 7/8 [936]	36 3/16 [919]	35 7/16 [900]	29 3/16 [742]	CA1 0309	CA1 0409	CA1 0509	CA1 0609	CA1 0709	CA1 7509	CA1 0809	CA1 0909	CA1 1009	CA1 1109	CA1 1209
40 13/16 [1036]	40 1/8 [1019]	39 3/8 [1000]	33 1/8 [842]	CA1 0310	CA1 0410	CA1 0510	CA1 0610	CA1 0710	CA1 7510	CA1 0810	CA1 0910	CA1 1010	CA1 1110	CA1 1210
42 11/16 [1084]	42 [1067]	41 1/4 [1048]	35 1/16 [890]	CA1 0311	CA1 0411	CA1 0511	CA1 0611	CA1 0711	CA1 7511	CA1 0811	CA1 0911	CA1 1011	CA1 1111	CA1 1211
48 11/16 [1236]	48 [1219]	47 1/4 [1200]	41 [1042]	CA1 0312	CA1 0412	CA1 0512	CA1 0612	CA1 0712	CA1 7512	CA1 0812	CA1 0912	CA1 1012	CA1 1112	CA1 1212
56 9/16 [1436]	55 7/8 [1419]	55 1/8 [1400]	48 7/8 [1242]	CA1 0314	CA1 0414	CA1 0514	CA1 0614	CA1 0714	CA1 7514	CA1 0814	CA1 0914	CA1 1014	CA1 1114	CA1 1214
60 1/2 [1536]	59 13/16 [1519]	59 1/16 [1500]	52 13/16 [1342]	CA1 0315	CA1 0415	CA1 0515	CA1 0615	CA1 0715	CA1 7515	CA1 0815	CA1 0915	CA1 1015	CA1 1115	CA1 1215
64 7/16 [1636]	63 3/4 [1619]	63 [1600]	56 3/4 [1442]	CA1 0316	CA1 0416	CA1 0516	CA1 0616	CA1 0716	CA1 7516	CA1 0816	CA1 0916	CA1 1016	CA1 1116	CA1 1216
72 5/16 [1836]	71 5/8 [1819]	70 7/8 [1800]	64 5/8 [1642]	CA1 0318	CA1 0418	CA1 0518	CA1 0618	CA1 0718	CA1 7518	CA1 0818	CA1 0918	CA1 1018	CA1 1118	CA1 1218
80 3/16 [2036]	79 1/2 [2019]	78 3/4 [2000]	72 1/2 [1842]	CA1 0320	CA1 0420	CA1 0520	CA1 0620	CA1 0720	CA1 7520	CA1 0820	CA1 0920	CA1 1020	CA1 1120	CA1 1220
84 1/8 [2136]	83 7/16 [2119]	82 11/16 [2100]	76 7/16 [1942]	CA1 0321	CA1 0421	CA1 0521	CA1 0621	CA1 0721	CA1 7521	CA1 0821	CA1 0921	CA1 1021	CA1 1121	CA1 1221
91 15/16 [2336]	91 5/16 [2319]	90 9/16 [2300]	84 5/16 [2142]	CA1 0323	CA1 0423	CA1 0523	CA1 0623	CA1 0723	CA1 7523	CA1 0823	CA1 0923	CA1 1023	CA1 1123	CA1 1223
95 15/16 [2436]	95 1/4 [2419]	94 1/2 [2400]	88 1/4 [2242]	CA1 0324	CA1 0424	CA1 0524	CA1 0624	CA1 0724	CA1 7524	CA1 0824	CA1 0924	CA1 1024	CA1 1124	CA1 1224
103 3/4 [2636]	103 1/8 [2619]	102 3/8 [2600]	96 1/8 [2442]					CA1 0726	CA1 7526	CA1 0826	CA1 0926	CA1 1026	CA1 1126	CA1 1226
111 5/8 [2836]	111 [2819]	110 1/4 [2800]	104 [2642]					CA1 0728	CA1 7528	CA1 0828	CA1 0928	CA1 1028	CA1 1128	CA1 1228
119 1/2 [3036]	118 7/8 [3019]	118 1/8 [3000]	111 7/8 [2842]					CA1 0730	CA1 7530	CA1 0830	CA1 0930	CA1 1030	CA1 1130	CA1 1230

Height

Product Code

Standard sizes shown. Additional sizes may be available. Custom sizes can be ordered.

Glass Size = Visible Glass + 15/16" (24 mm)

- Note:
- Available with Mission sash. For a unit with a Mission sash, subtract 13/16" (21 mm) from the vertical visible glass measurement.
  - SDL/Grille patterns are dependent on SDL/Grille type and window size. Please verify SDL/Grille patterns before confirming your order.
  - For Masonry opening information see page Section A.
  - Sizes are shown as double glazing, not all sizes may be available in triple glazing.



### Fixed Casement Window Sizes

Width

Height

Rough Opening				55 7/8" [1419]	59 13/16" [1519]	63 3/4" [1619]	71 5/8" [1819]	79 1/2" [2019]	83 7/16" [2119]	91 5/16" [2319]	95 1/4" [2419]	103 1/8" [2619]	111" [2819]	118 7/8" [3019]
Wood Exterior	Metal Clad	Frame		55 1/8" [1400]	59 1/16" [1500]	63" [1600]	70 7/8" [1800]	78 3/4" [2000]	82 11/16" [2100]	90 9/16" [2300]	94 1/2" [2400]	102 3/8" [2600]	110 1/4" [2800]	118 1/8" [3000]
		Visible Glass		49 1/8" [1247]	53 1/16" [1347]	56 15/16" [1447]	64 13/16" [1647]	72 11/16" [1847]	76 5/8" [1947]	84 1/2" [2147]	88 7/16" [2247]	96 5/16" [2447]	104 3/16" [2647]	112 1/16" [2847]
13 1/4" [336]	12 9/16" [319]	11 13/16" [300]	5 9/16" [142]	CA1 1403	CA1 1503	CA1 1603	CA1 1803	CA1 2003	CA1 2103	CA1 2303	CA1 2403			
17 3/16" [436]	16 1/2" [419]	15 3/4" [400]	9 1/2" [242]	CA1 1404	CA1 1504	CA1 1604	CA1 1804	CA1 2004	CA1 2104	CA1 2304	CA1 2404	CA1 2604		
21 1/8" [536]	20 7/16" [519]	19 11/16" [500]	13 7/16" [342]	CA1 1405	CA1 1505	CA1 1605	CA1 1805	CA1 2005	CA1 2105	CA1 2305	CA1 2405	CA1 2605	CA1 2805	CA1 3005
25 1/16" [636]	24 3/8" [619]	23 5/8" [600]	17 3/8" [442]	CA1 1406	CA1 1506	CA1 1606	CA1 1806	CA1 2006	CA1 2106	CA1 2306	CA1 2406	CA1 2606	CA1 2806	CA1 3006
29" [736]	28 5/16" [719]	27 9/16" [700]	21 5/16" [542]	CA1 1407	CA1 1507	CA1 1607	CA1 1807	CA1 2007	CA1 2107	CA1 2307	CA1 2407	CA1 2607	CA1 2807	CA1 3007
30 15/16" [786]	30 1/4" [769]	29 1/2" [750]	23 5/16" [592]	CA1 1475	CA1 1575	CA1 1675	CA1 1875	CA1 2075	CA1 2175	CA1 2375	CA1 2475	CA1 2675	CA1 2875	CA1 3075
32 15/16" [836]	32 1/4" [819]	31 1/2" [800]	25 1/4" [642]	CA1 1408	CA1 1508	CA1 1608	CA1 1808	CA1 2008	CA1 2108	CA1 2308	CA1 2408	CA1 2608	CA1 2808	CA1 3008
36 7/8" [936]	36 3/16" [919]	35 7/16" [900]	29 3/16" [742]	CA1 1409	CA1 1509	CA1 1609	CA1 1809	CA1 2009	CA1 2109	CA1 2309	CA1 2409	CA1 2609	CA1 2809	CA1 3009
40 13/16" [1036]	40 1/8" [1019]	39 3/8" [1000]	33 1/8" [842]	CA1 1410	CA1 1510	CA1 1610	CA1 1810	CA1 2010	CA1 2110	CA1 2310	CA1 2410	CA1 2610	CA1 2810	CA1 3010
42 11/16" [1084]	42" [1067]	41 1/4" [1048]	35 1/16" [890]	CA1 1411	CA1 1511	CA1 1611	CA1 1811	CA1 2011	CA1 2111	CA1 2311	CA1 2411	CA1 2611	CA1 2811	CA1 3011
48 11/16" [1236]	48" [1219]	47 1/4" [1200]	41" [1042]	CA1 1412	CA1 1512	CA1 1612	CA1 1812	CA1 2012	CA1 2112	CA1 2312	CA1 2412	CA1 2612	CA1 2812	CA1 3012
56 9/16" [1436]	55 7/8" [1419]	55 1/8" [1400]	48 7/8" [1242]	CA1 1414	CA1 1514	CA1 1614	CA1 1814	CA1 2014	CA1 2114	CA1 2314	CA1 2414	CA1 2614	CA1 2814	CA1 3014
60 1/2" [1536]	59 13/16" [1519]	59 1/16" [1500]	52 13/16" [1342]	CA1 1415	CA1 1515	CA1 1615	CA1 1815	CA1 2015	CA1 2115	CA1 2315	CA1 2415	CA1 2615	CA1 2815	CA1 3015
64 7/16" [1636]	63 3/4" [1619]	63" [1600]	56 3/4" [1442]	CA1 1416	CA1 1516	CA1 1616	CA1 1816	CA1 2016	CA1 2116	CA1 2316	CA1 2416	CA1 2616	CA1 2816	CA1 3016
72 5/16" [1836]	71 5/8" [1819]	70 7/8" [1800]	64 5/8" [1642]	CA1 1418	CA1 1518	CA1 1618	CA1 1818	CA1 2018	CA1 2118	CA1 2318	CA1 2418	CA1 2618	CA1 2818	
80 3/16" [2036]	79 1/2" [2019]	78 3/4" [2000]	72 1/2" [1842]	CA1 1420	CA1 1520	CA1 1620	CA1 1820	CA1 2020	CA1 2120	CA1 2320	CA1 2420	CA1 2620		
84 1/8" [2136]	83 7/16" [2119]	82 11/16" [2100]	76 7/16" [1942]	CA1 1421	CA1 1521	CA1 1621	CA1 1821	CA1 2021	CA1 2121	CA1 2321	CA1 2421			
91 15/16" [2336]	91 5/16" [2319]	90 9/16" [2300]	84 5/16" [2142]	CA1 1423	CA1 1523	CA1 1623	CA1 1823	CA1 2023	CA1 2123					
95 15/16" [2436]	95 1/4" [2419]	94 1/2" [2400]	88 1/4" [2242]	CA1 1424	CA1 1524	CA1 1624	CA1 1824	CA1 2024	CA1 2124					
103 3/4" [2636]	103 1/8" [2619]	102 3/8" [2600]	96 1/8" [2442]	CA1 1426	CA1 1526	CA1 1626	CA1 1826							
111 5/8" [2836]	111" [2819]	110 1/4" [2800]	104" [2642]	CA1 1428	CA1 1528	CA1 1628	CA1 1828							
119 1/2" [3036]	118 7/8" [3019]	118 1/8" [3000]	111 7/8" [2842]	CA1 1430	CA1 1530	CA1 1630	CA1 1830							

Product Code

Standard sizes shown. Additional sizes may be available. Custom sizes can be ordered.

Glass Size = Visible Glass + 15/16" (24 mm)

- Note:
- Available with Mission sash. For a unit with a Mission sash, subtract 13/16" (21 mm) from the vertical visible glass measurement.
  - SDL/Grille patterns are dependent on SDL/Grille type and window size. Please verify SDL/Grille patterns before confirming your order.
  - For Masonry opening information see page Section A.
  - Sizes are shown as double glazing, not all sizes may be available in triple glazing.

## French Casement Window Sizes

Width

Rough Opening													
Wood Exterior	Metal Clad	Frame											
		Visible Glass											
			32 1/4" [819]	40 1/8" [1019]	41 1/8" [1044]	42" [1067]	48" [1219]	55 7/8" [1419]	59 13/16" [1519]	63 3/4" [1619]	71 5/8" [1819]		
31 1/2" [800]	39 3/8" [1000]	40 3/8" [1025]	41 1/4" [1048]	47 1/4" [1200]	55 1/8" [1400]	59 1/16" [1500]	63" [1600]	70 7/8" [1800]					
		10 5/16" [262]	14 1/4" [362]	14 3/4" [374]	15 3/16" [386]	18 3/16" [462]	22 1/8" [562]	24 1/8" [612]	26 1/16" [662]	30" [762]			
25 1/16" [636]	24 3/8" [619]	23 5/8" [600]	17 3/8" [442]	FCA + 0806	FCA + 1006		FCA + 1106	FCA + 1206	FCA + 1406				
29" [736]	28 5/16" [719]	27 9/16" [700]	21 5/16" [542]	FCA + 0807	FCA + 1007		FCA + 1107	FCA + 1207	FCA + 1407	FCA + 1507	FCA + 1607		
32 15/16" [836]	32 1/4" [819]	31 1/2" [800]	25 1/4" [642]	FCA + 0808	FCA + 1008	FCA * 1008	FCA 1108	FCA 1208	FCA 1408	FCA 1508	FCA 1608	FCA + 1808	
36 7/8" [936]	36 3/16" [919]	35 7/16" [900]	29 3/16" [742]	FCA + 0809	FCA + 1009	FCA * 1009	FCA 1109	FCA 1209	FCA 1409	FCA 1509	FCA 1609	FCA 1809	
40 13/16" [1036]	40 1/8" [1019]	39 3/8" [1000]	33 1/8" [842]	FCA + 0810	FCA + 1010	FCA * 1010	FCA 1110	FCA 1210	FCA 1410	FCA 1510	FCA 1610	FCA 1810	
42 11/16" [1084]	42" [1067]	41 1/4" [1048]	35 1/16" [890]	FCA + 0811	FCA + 1011	FCA * 1011	FCA 1111	FCA 1211	FCA 1411	FCA 1511	FCA 1611	FCA 1811	
48 11/16" [1236]	48" [1219]	47 1/4" [1200]	41" [1042]	FCA + 0812	FCA + 1012	FCA * 1012	FCA 1112	FCA 1212	FCA 1412	FCA 1512	FCA 1612	FCA 1812	
56 9/16" [1436]	55 7/8" [1419]	55 1/8" [1400]	48 7/8" [1242]	FCA + 0814	FCA + 1014	FCA * 1014	FCA 1114	FCA 1214	FCA 1414	FCA 1514	FCA 1614	FCA 1814	
60 1/2" [1536]	59 13/16" [1519]	59 1/16" [1500]	52 13/16" [1342]	FCA + 0815	FCA + 1015	FCA * 1015	FCA 1115	FCA 1215	FCA 1415	FCA 1515	FCA 1615	FCA 1815	
64 7/16" [1636]	63 3/4" [1619]	63" [1600]	56 3/4" [1442]	FCA + 0816	FCA + 1016	FCA * 1016	FCA 1116	FCA 1216	FCA 1416	FCA 1516	FCA 1616	FCA 1816	
72 5/16" [1836]	71 5/8" [1819]	70 7/8" [1800]	64 5/8" [1642]	FCA + 0818	FCA + 1018	FCA * 1018	FCA 1118	FCA 1218	FCA 1418	FCA 1518	FCA * 1618	FCA * 1818	
						Min Width Rotogear							

Product Code

Glass Size = Visible Glass + 15/16" (24 mm)

\* Only available with rotogear hardware

+ Only available with pushout hardware

**Standard sizes Shown. Additional sizes may be available. Custom sizes can be ordered.**

- Note:**
- Available with Mission sash. For a unit with a Mission sash, subtract 13/16" (21 mm) from the vertical visible glass measurement.
  - SDL/Grille patterns are dependent on SDL/Grille type and window size. Please verify SDL/Grille patterns before confirming your order.
  - For Masonry opening information see page Section A.
  - Sizes are shown as double glazing, not all sizes may be available in triple glazing.

- Egress calculations are based on a 20" width opening. Opening does not open a full 90°.
  - ★ Meets US Egress: 20" in width, 24" in height, with a total egress area of 5.7 Sq Ft.
  - ✦ Meets Canadian Egress: 15" in width, 15" in height, with a total egress area of 3.8 Sq Ft.
- Please check your local building codes for any variation in Egress Standards from those stated above. For egress information, contact your Authorized Loewen Dealer.

### Camber Top Casement 1 Wide Window Sizes

Width

Rough Opening				16 1/2" [419]	20 7/16" [519]	24 3/8" [619]	28 5/16" [719]	30 1/4" [769]	32 1/4" [819]	36 3/16" [919]
Wood Exterior	Metal Clad	Frame		15 3/4" [400]	19 11/16" [500]	23 5/8" [600]	27 9/16" [700]	29 1/2" [750]	31 1/2" [800]	35 7/16" [900]
		Visible Glass		9 3/4" [247]	13 11/16" [347]	17 5/8" [447]	21 9/16" [547]	23 1/2" [597]	25 1/2" [647]	29 7/16" [747]
29" [736]	28 5/16" [719]	27 9/16" [700]	21 3/16" [538]	CTC1 0407	CTC1 0507	CTC1 0607	CTC1 0707	CTC1 7507	CTC1 0807	
30 15/16" [786]	30 1/4" [769]	29 1/2" [750]	23 5/8" [588]	CTC1 0475	CTC1 0575	CTC1 0675	CTC1 0775	CTC1 7575	CTC1 0875	
32 15/16" [836]	32 1/4" [819]	31 1/2" [800]	25 1/8" [638]	CTC1 0408	CTC1 0508	CTC1 0608	CTC1 0708	CTC1 7508	CTC1 0808	
36 7/8" [936]	36 3/16" [919]	35 7/16" [900]	29 1/16" [738]	CTC1 0409	CTC1 0509	CTC1 0609	CTC1 0709	CTC1 7509	CTC1 0809	CTC1 0909
40 13/16" [1036]	40 1/8" [1019]	39 3/8" [1000]	33" [838]	CTC1 0410	CTC1 0510	CTC1 0610	CTC1 0710	CTC1 7510	CTC1 0810	CTC1 0910
42 11/16" [1084]	42" [1067]	41 1/4" [1048]	34 7/8" [886]	CTC1 0411	CTC1 0511	CTC1 0611	CTC1 0711	CTC1 7511	CTC1 0811	CTC1 0911
48 11/16" [1236]	48" [1219]	47 1/4" [1200]	40 7/8" [1038]	CTC1 0412	CTC1 0512	CTC1 0612	CTC1 0712	CTC1 7512	CTC1 0812	CTC1 0912
56 9/16" [1436]	55 7/8" [1419]	55 1/8" [1400]	48 3/4" [1238]	CTC1 0414	CTC1 0514	CTC1 0614	CTC1 0714	CTC1 7514	CTC1 0814	CTC1 0914
60 1/2" [1536]	59 13/16" [1519]	59 1/16" [1500]	52 11/16" [1338]	CTC1 0415	CTC1 0515	CTC1 0615	CTC1 0715	CTC1 7515	CTC1 0815	CTC1 0915
64 7/16" [1636]	63 3/4" [1619]	63" [1600]	56 5/8" [1438]	CTC1 0416	CTC1 0516	CTC1 0616	CTC1 0716	CTC1 7516	CTC1 0816	CTC1 0916
72 5/16" [1836]	71 5/8" [1819]	70 7/8" [1800]	64 1/2" [1638]	CA1 0418	CTC1 0518	CTC1 0618	CTC1 0718	CTC1 7518	CTC1 0818	CTC1 0918
84 1/8" [2136]	83 7/16" [2119]	82 11/16" [2100]	76 5/16" [1938]	CA1 0421	CTC1 0521	CTC1 0621	CTC1 0721	CTC1 7521	CTC1 0821	CTC1 0921

Height

Product Code

Glass Size = Visible Glass + 15/16" (24 mm)

Standard sizes shown. Additional sizes may be available. Custom sizes can be ordered.

- Note:**
- Available with Mission sash. For a unit with a Mission sash, subtract 13/16" (21 mm) from the vertical visible glass measurement.
  - SDL/Grille patterns are dependent on SDL/Grille type and window size. Please verify SDL/Grille patterns before confirming your order.
  - For Masonry opening information see page Section A.
  - Sizes are shown as double glazing, not all sizes may be available in triple glazing.

## Camber Top Casement 2 Wide Window Sizes

Width

Rough Opening				32 1/4" [819]	40 1/8" [1019]	48" [1219]	55 7/8" [1419]	59 13/16" [1519]	63 3/4" [1619]	71 5/8" [1819]
Wood Exterior	Metal Clad	Frame		31 1/2" [800]	39 3/8" [1000]	47 1/4" [1200]	55 1/8" [1400]	59 1/16" [1500]	63" [1600]	70 7/8" [1800]
		Visible Glass		9 3/4" [247]	13 11/16" [347]	17 5/8" [447]	21 9/16" [547]	23 1/2" [597]	25 1/2" [647]	29 7/16" [747]
29" [736]	28 5/16" [719]	27 9/16" [700]	21 3/16" [538]	CTC2 0807	CTC2 1007	CTC2 1207	CTC2 1407	CTC2 1475	CTC2 1408	
30 15/16" [786]	30 1/4" [769]	29 1/2" [750]	23 5/8" [588]	CTC2 0875	CTC2 1075	CTC2 1275	CTC2 1475	CTC2 1575	CTC2 1508	
32 15/16" [836]	32 1/4" [819]	31 1/2" [800]	25 1/8" [638]	CTC2 0808	CTC2 1008	CTC2 1208	CTC2 1408	CTC2 1508	CTC2 1608	
36 7/8" [936]	36 3/16" [919]	35 7/16" [900]	29 1/16" [738]	CTC2 0809	CTC2 1009	CTC2 1209	CTC2 1409	CTC2 1509	CTC2 1609	CTC2 1809
40 13/16" [1036]	40 1/8" [1019]	39 3/8" [1000]	33" [838]	CTC2 0810	CTC2 1010	CTC2 1210	CTC2 1410	CTC2 1510	CTC2 1610	CTC2 1810
42 11/16" [1084]	42" [1067]	41 1/4" [1048]	34 7/8" [886]	CTC2 0811	CTC2 1011	CTC2 1211	CTC2 1411	CTC2 1511	CTC2 1611	CTC2 1811
48 11/16" [1236]	48" [1219]	47 1/4" [1200]	40 7/8" [1038]	CTC2 0812	CTC2 1012	CTC2 1212	CTC2 1412	CTC2 1512	CTC2 1612	CTC2 1812
56 9/16" [1436]	55 7/8" [1419]	55 1/8" [1400]	48 3/4" [1238]	CTC2 0814	CTC2 1014	CTC2 1214	CTC2 1414	CTC2 1514	CTC2 1614	CTC2 1814
60 1/2" [1536]	59 13/16" [1519]	59 1/16" [1500]	52 11/16" [1338]	CTC2 0815	CTC2 1015	CTC2 1215	CTC2 1415	CTC2 1515	CTC2 1615	CTC2 1815
64 7/16" [1636]	63 3/4" [1619]	63" [1600]	56 5/8" [1438]	CTC2 0816	CTC2 1016	CTC2 1216	CTC2 1416	CTC2 1516	CTC2 1616	CTC2 1816
72 5/16" [1836]	71 5/8" [1819]	70 7/8" [1800]	64 1/2" [1638]	CTC2 0818	CTC2 1018	CTC2 1218	CTC2 1418	CTC2 1518	CTC2 1618	CTC2 1818
84 1/8" [2136]	83 7/16" [2119]	82 11/16" [2100]	76 5/16" [1938]	CTC2 0821	CTC2 1021	CTC2 1221	CTC2 1421	CTC2 1521	CTC2 1621	CTC2 1821

Height

Product Code

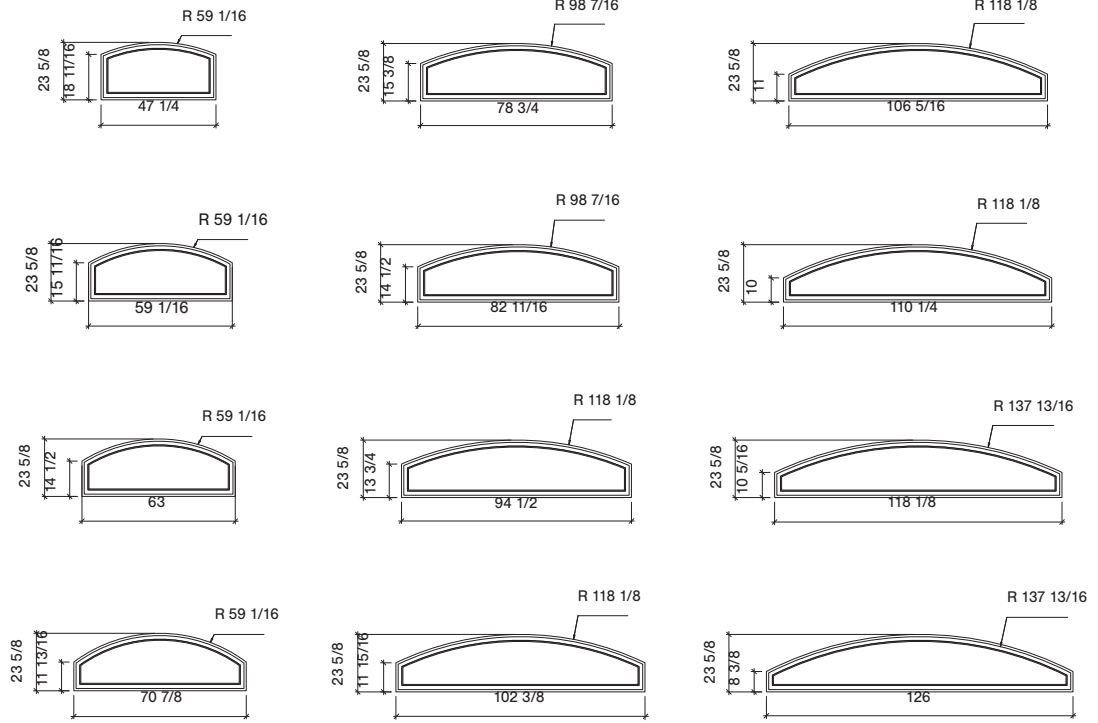
Glass Size = Visible Glass + 15/16" (24 mm)

Standard sizes shown. Additional sizes may be available. Custom sizes can be ordered.

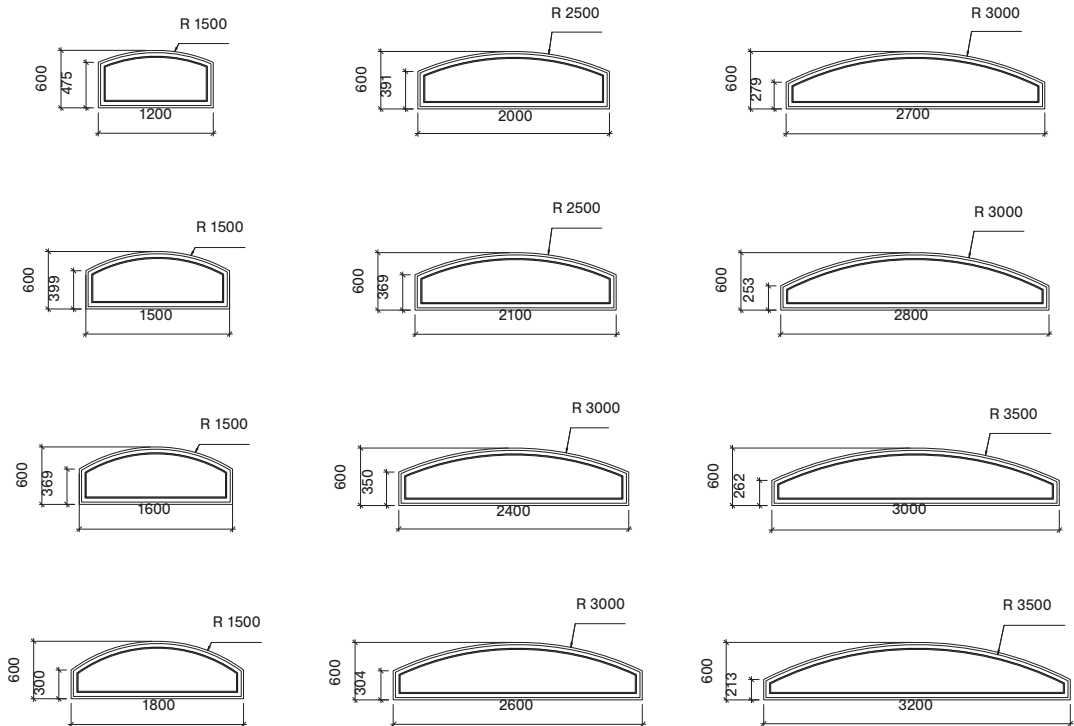
- Note:
- Available with Mission sash. For a unit with a Mission sash, subtract 13/16" (21 mm) from the vertical visible glass measurement.
  - SDL/Grille patterns are dependent on SDL/Grille type and window size. Please verify SDL/Grille patterns before confirming your order.
  - For Masonry opening information see page Section A.
  - Sizes are shown as double glazing, not all sizes may be available in triple glazing.

# Camber Top Casement Standard Radius Elevations

## Imperial



## Metric



**Note:** • Other jamb widths available.  
• All dimensions to have +/- 1/16" (2mm) tolerance.

### Half Round Casement Window Sizes

				Width					
Rough Opening		Frame		Width					
				Wood Exterior		Metal Clad		Visible Glass	
				40 13/16" [1036]	40 1/8" [1019]	39 3/8" [1000]	33 1/8" [842]	24 3/8" [619]	28 5/16" [719]
				23 5/8" [600]	27 9/16" [700]	29 1/2" [750]	31 1/2" [800]	35 7/16" [900]	
				17 5/8" [447]	21 9/16" [547]	23 1/2" [597]	25 1/2" [647]	29 7/16" [747]	
Height	40 13/16" [1036]	40 1/8" [1019]	39 3/8" [1000]	33 1/8" [842]	CA1 0610	CA1 0710			
	42 11/16" [1084]	42" [1067]	41 1/4" [1048]	35 1/16" [890]	CA1 0611	CA1 0711			
	48 11/16" [1236]	48" [1219]	47 1/4" [1200]	41" [1042]	CA1 0612	CA1 0712	CA1 7512	CA1 0812	
	56 9/16" [1436]	55 7/8" [1419]	55 1/8" [1400]	48 7/8" [1242]	CA1 0614	CA1 0714	CA1 7514	CA1 0814	CA1 0914
	60 1/2" [1536]	59 13/16" [1519]	59 1/16" [1500]	52 13/16" [1342]	CA1 0615	CA1 0715	CA1 7515	CA1 0815	CA1 0915
	64 7/16" [1636]	63 3/4" [1619]	63" [1600]	56 3/4" [1442]	CA1 0616	CA1 0716	CA1 7516	CA1 0816	CA1 0916
	72 5/16" [1836]	71 5/8" [1819]	70 7/8" [1800]	64 5/8" [1642]	CA1 0618	CA1 0718	CA1 7518	CA1 0818	CA1 0918
	84 1/8" [2136]	83 7/16" [2119]	82 11/16" [2100]	76 7/16" [1942]	CA1 0621	CA1 0721	CA1 7521	CA1 0821	CA1 0921

Product Code

Glass Size = Visible Glass + 15/16" (24 mm)

**Standard sizes shown. Additional sizes may be available. Custom sizes can be ordered.**

- Note:**
- Available with Mission sash. For a unit with a Mission sash, subtract 13/16" (21 mm) from the vertical visible glass measurement.
  - SDL/Grille patterns are dependent on SDL/Grille type and window size. Please verify SDL/Grille patterns before confirming your order.
  - For Masonry opening information see page Section A.
  - Sizes are shown as double glazing, not all sizes may be available in triple glazing.



### Oversized Casement Window (Roto Gear Only)

Width

Height

Rough Opening				16 1/2" [419]	20 7/16" [519]	24 3/8" [619]	28 5/16" [719]	30 1/4" [769]	32 1/4" [819]	36 3/16" [919]	40 1/8" [1019]	42" [1067]	48" [1219]
Wood Exterior	Metal Clad	Frame											
		Visible Glass		15 3/4" [400]	19 11/16" [500]	23 5/8" [600]	27 9/16" [700]	29 1/2" [750]	31 1/2" [800]	35 7/16" [900]	39 3/8" [1000]	41 1/4" [1048]	47 1/4" [1200]
				9 3/4" [247]	13 11/16" [347]	17 5/8" [447]	21 9/16" [547]	23 1/2" [597]	25 1/2" [647]	29 7/16" [747]	33 3/8" [847]	35 1/4" [895]	41 1/4" [1047]
36 7/8" [936]	36 3/16" [919]	35 7/16" [900]	29 3/16" [742]								CA1 * 1009		
40 13/16" [1036]	40 1/8" [1019]	39 3/8" [1000]	33 1/8" [842]								CA1 * 1010	CA1 * 1110	
42 11/16" [1084]	42" [1067]	41 1/4" [1048]	35 1/16" [890]								CA1 * 1011	CA1 * 1111	
48 11/16" [1236]	48" [1219]	47 1/4" [1200]	41" [1042]								★★ CA1 * 1012	★★ CA1 * 1112	CA1 * 1212
56 9/16" [1436]	55 7/8" [1419]	55 1/8" [1400]	48 7/8" [1242]								★★ CA1 * 1014	★★ CA1 * 1114	CA1 * 1214
60 1/2" [1536]	59 13/16" [1519]	59 1/16" [1500]	52 13/16" [1342]								★★ CA1 * 1015	★★ CA1 * 1115	CA1 * 1215
64 7/16" [1636]	63 3/4" [1619]	63" [1600]	56 3/4" [1442]								★★ CA1 * 1016	★★ CA1 * 1116	CA1 * 1216
72 5/16" [1836]	71 5/8" [1819]	70 7/8" [1800]	64 5/8" [1642]								★★ CA1 * 1018	★★ CA1 * 1118	CA1 * 1218
84 1/8" [2136]	83 7/16" [2119]	82 11/16" [2100]	76 7/16" [1942]								★★ CA1 * 1021	★★ CA1 * 1121	CA1 * 1221
95 7/8" [2436]	95 1/4" [2419]	94 1/2" [2400]	88 1/4" [2242]	CA1* 0424	CA1* 0524	CA1* 0624	CA1* 0724	★★ CA1* 7524	★★ CA1* 0824	★★ CA1* 0924	★★ CA1 * 1024	★★ CA1 * 1124	CA1 * 1224

Product Code

Glass Size = Visible Glass + 15/16" (24 mm)

\*Only available with roto gear hardware

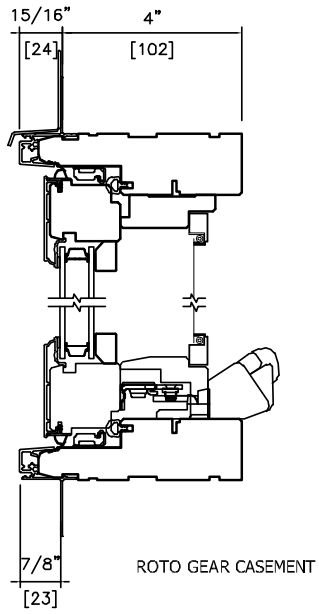
**Standard sizes Shown. Additional sizes may be available. Custom sizes can be ordered.**

- Note:**
- Available with Mission sash. For a unit with a Mission sash, subtract 13/16" (21 mm) from the vertical visible glass measurement.
  - SDL/Grille patterns are dependent on SDL/Grille type and window size. Please verify SDL/Grille patterns before confirming your order.
  - Available with Push Out hardware.
  - For Masonry opening information see page Section A.
  - Sizes are shown as double glazing, not all sizes may be available in triple glazing.

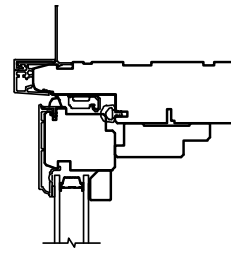
- Egress calculations are based on a 20" width opening. Opening does not open a full 90°.
  - ★ Meets US Egress: 20" in width, 24" in height, with a total egress area of 5.7 Sq Ft.
  - ♣ Meets Canadian Egress: 15" in width, 15" in height, with a total egress area of 3.8 Sq Ft.
- Please check your local building codes for any variation in Egress Standards from those stated above. For egress information, contact your Authorized Loewen Dealer.

## Contemporary Frame Cladding Detail

### Head & Sill Detail



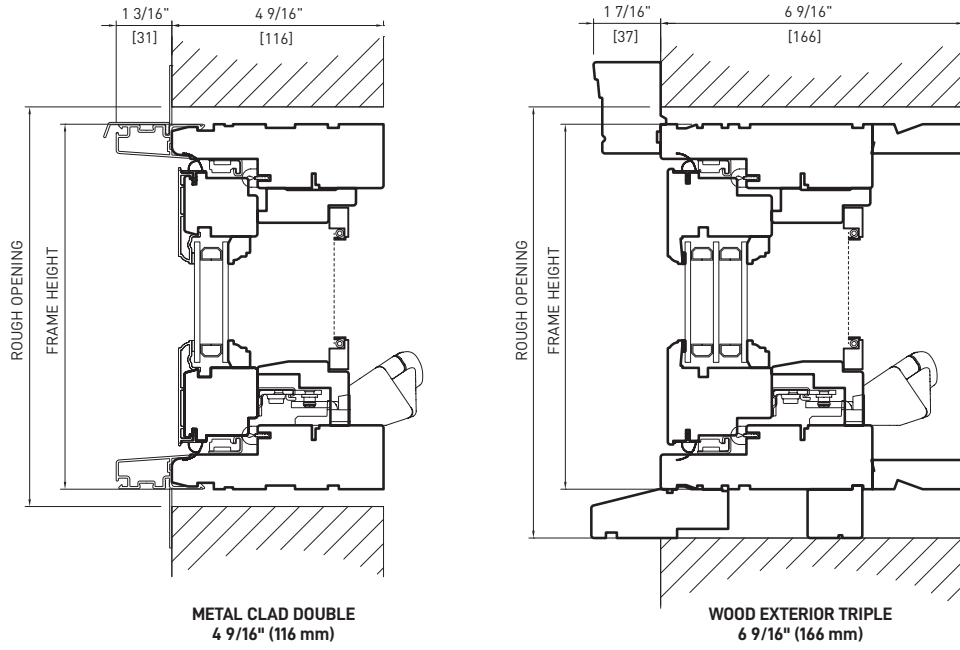
### Casing



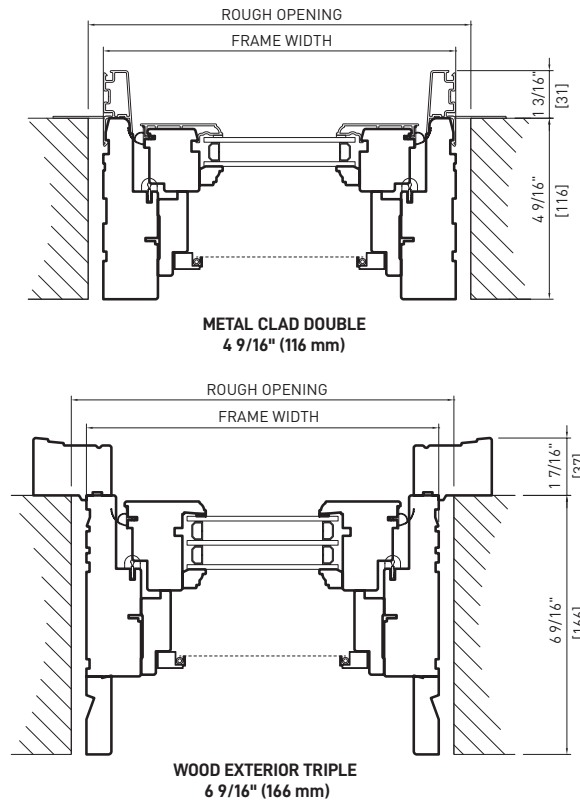
AWNING/CASEMENT

# Casement Window Wall Connection Detail

## Head & Sill Detail



## Plan View

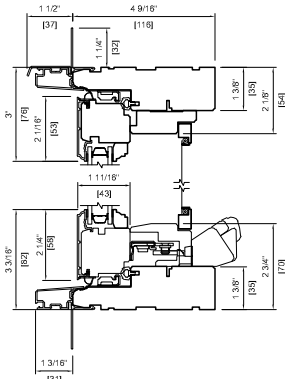


**Note:**

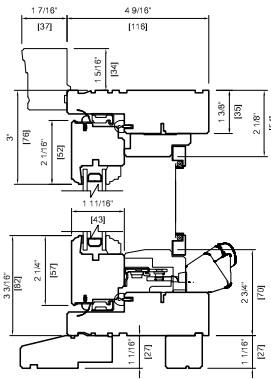
- Other jamb widths available.
- All dimensions to have +/- 1/16" (2mm) tolerance.

# Casement Window Detail

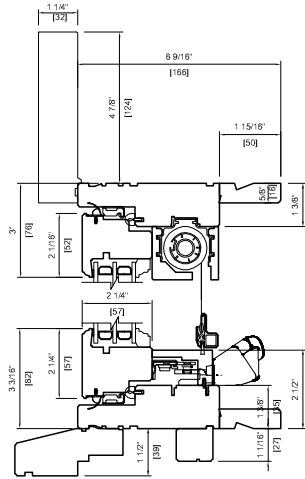
## Head & Sill Detail



METAL CLAD DOUBLE  
4 9/16" (116 mm)  
STANDARD SCREEN

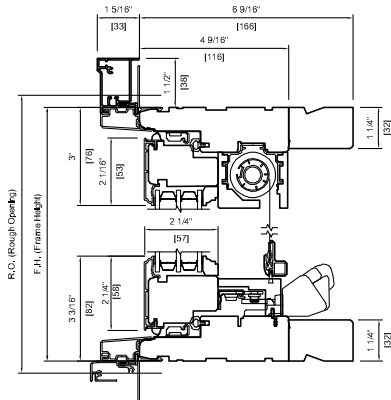


WOOD EXTERIOR DOUBLE  
4 9/16" (116 mm)  
2" BRICKMOULD WITH STANDARD SUBSILL  
STANDARD SCREEN



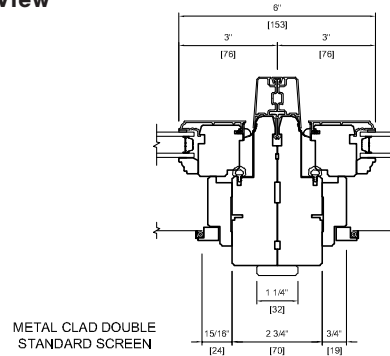
WOOD EXTERIOR TRIPLE  
6 9/16" (166 mm)  
5 1/2" FLAT CASING WITH BC SUBSILL  
RETRACTABLE SCREEN

## Head & Sill Detail

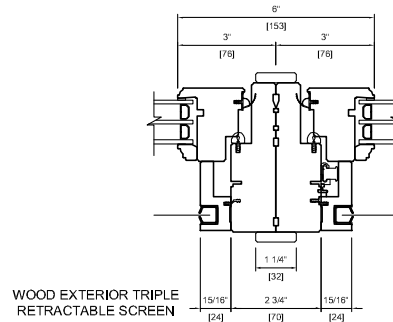


METAL CLAD DOUBLE  
6 9/16" (166 mm)  
2" BRICKMOULD WITH STANDARD SILL NOSE  
RETRACTABLE SCREEN

## Plan View



METAL CLAD DOUBLE  
STANDARD SCREEN

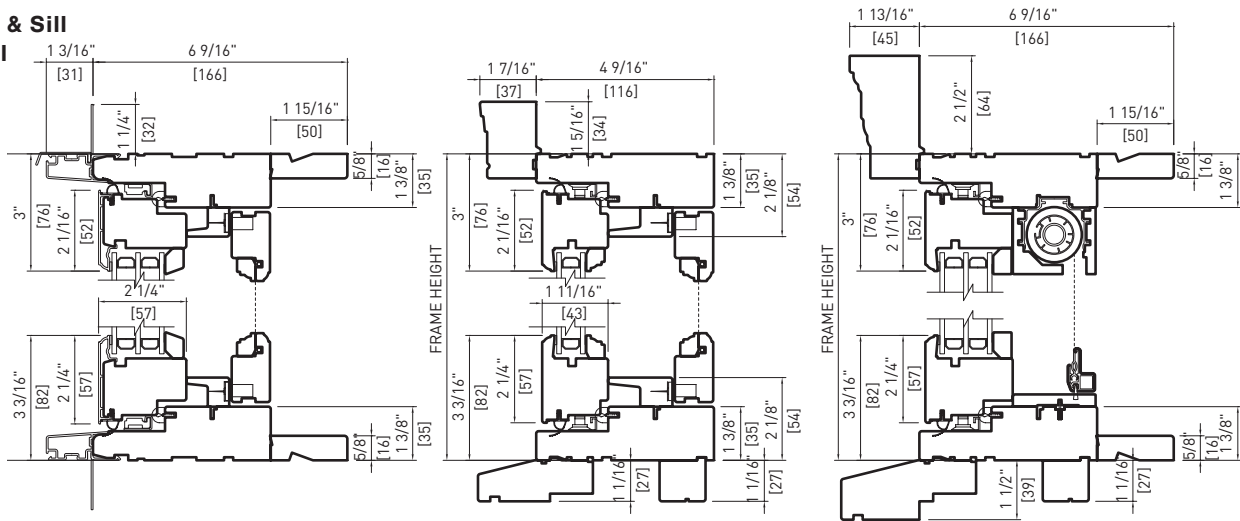


WOOD EXTERIOR TRIPLE  
RETRACTABLE SCREEN

Note: • Other jamb widths available.  
• All dimensions to have +/- 1/16" (2mm) tolerance.

# Push Out Casement Window Detail

## Head & Sill Detail

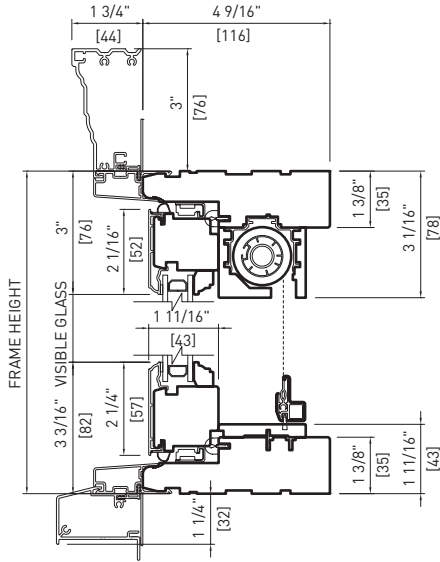


**METAL CLAD TRIPLE**  
 6 9/16" (166 mm)  
 PUTTY GLAZING STOPS  
 HINGED WOOD SCREEN

**WOOD EXTERIOR DOUBLE**  
 4 9/16" (116 mm)  
 2" BRICKMOULD WITH  
 STANDARD SILL NOSING  
 HINGED WOOD SCREEN

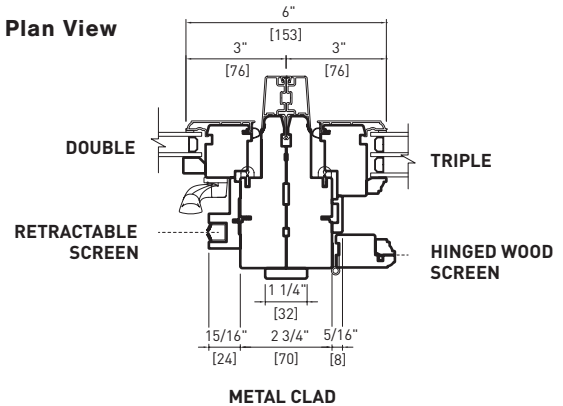
**WOOD EXTERIOR TRIPLE**  
 6 9/16" (166 mm)  
 ADAMS CASING WITH BC SUBSILL  
 SQUARE GLAZING STOPS  
 RETRACTABLE SCREEN

## Head & Sill Detail

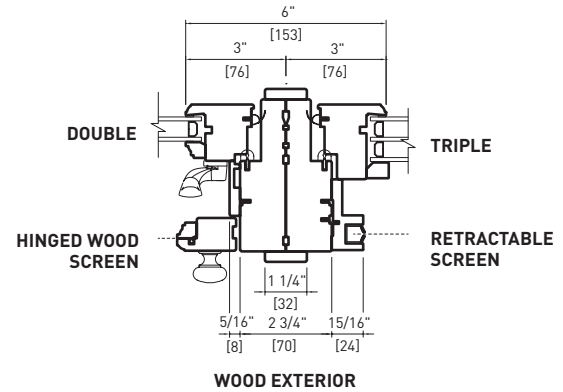


**METAL CLAD DOUBLE**  
 4 9/16" (116 mm)  
 ADAMS CASING WITH BC SILL NOSE  
 RETRACTABLE SCREEN

## Plan View



**METAL CLAD**

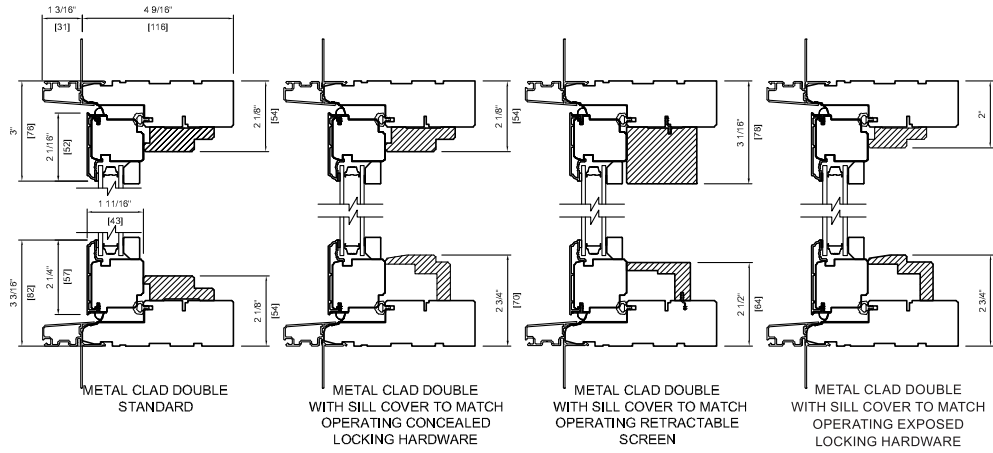


**WOOD EXTERIOR**

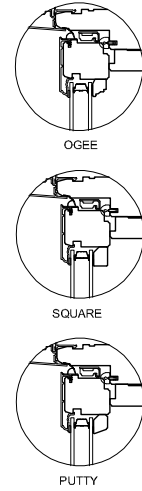
**Note:** • Other jamb widths available.  
 • All dimensions to have +/- 1/16" (2mm) tolerance.

## Fixed Casement Window Detail

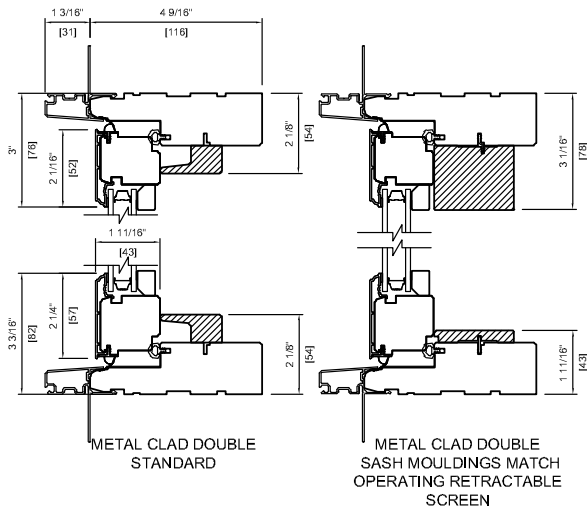
### Head & Sill Detail Roto Gear Sash Moulding Options



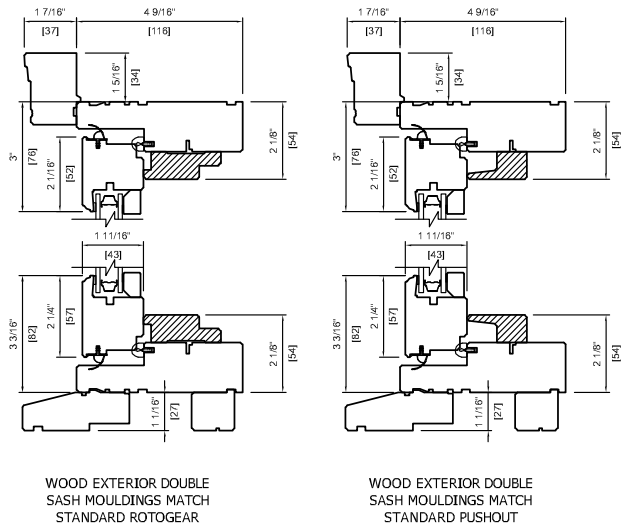
### Glazing Stop Profiles



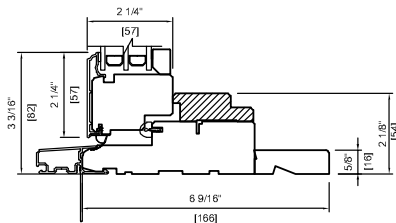
### Head & Sill Detail Pushout - Sash Moulding Options



### Head & Sill Detail Wood Exterior - Sash Moulding Options Are The Same As Metal Clad



METAL CLAD TRIPLE WITH JAMB EXTENSION - SASH MOULDING OPTIONS ARE THE SAME AS DOUBLE.



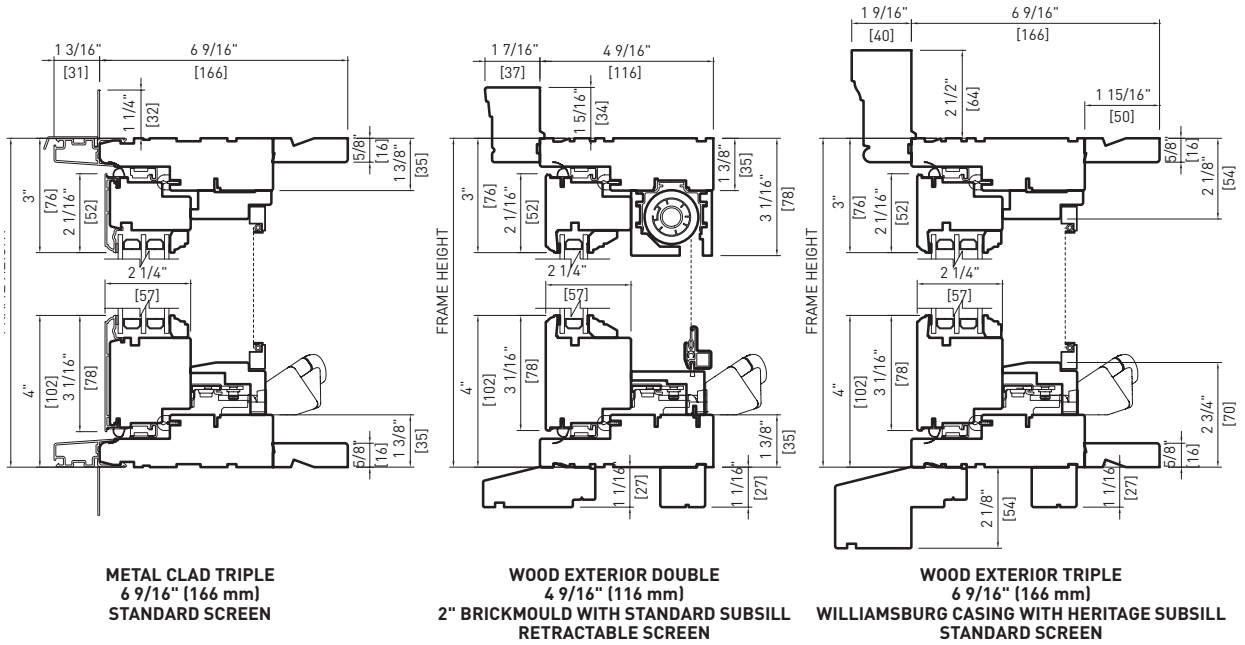
**Note:**

- Other jamb widths available.
- All dimensions to have +/- 1/16" (2mm) tolerance.

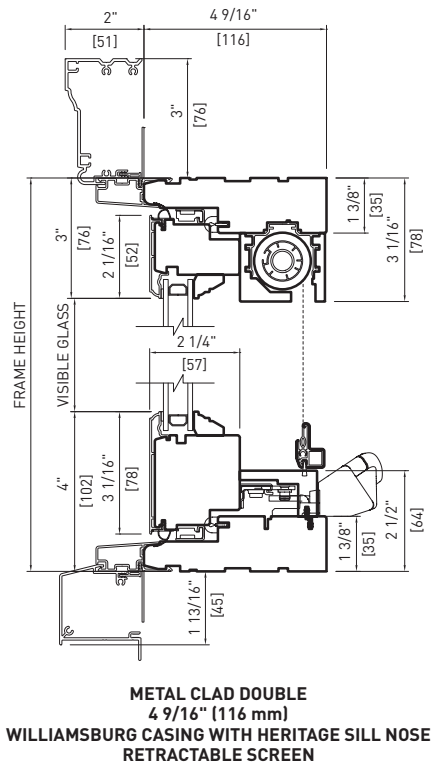


# Mission Casement Window Detail

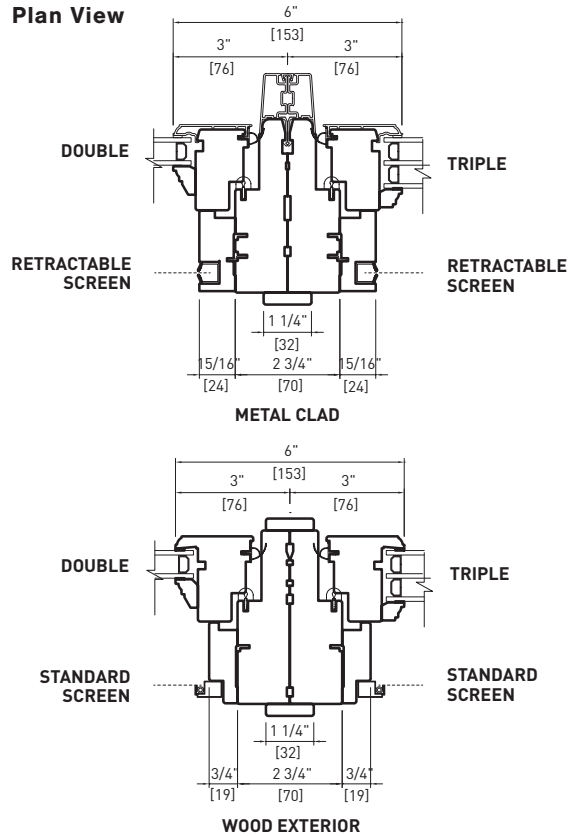
## Head & Sill Detail



## Head & Sill Detail



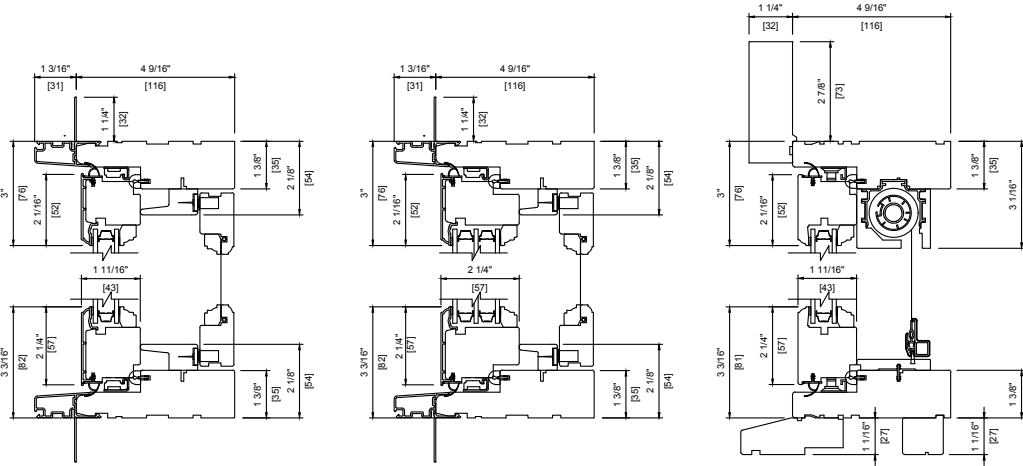
## Plan View



Note: • Other jamb widths available.  
• All dimensions to have +/- 1/16" (2mm) tolerance.

# Push Out French Casement Window Detail

## Head & Sill Detail

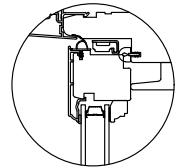


METAL CLAD DOUBLE  
4 9/16" (116 mm)  
HINGED SCREEN

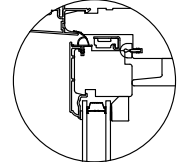
METAL CLAD TRIPLE  
4 9/16" (116 mm)  
HINGED SCREEN

WOOD EXTERIOR DOUBLE  
4 9/16" (116 mm)  
3 1/2" FLAT CASING STANDARD SUBSILL  
RETRACTABLE SCREEN

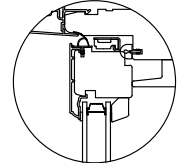
## Glazing Stop Profiles



OGEE

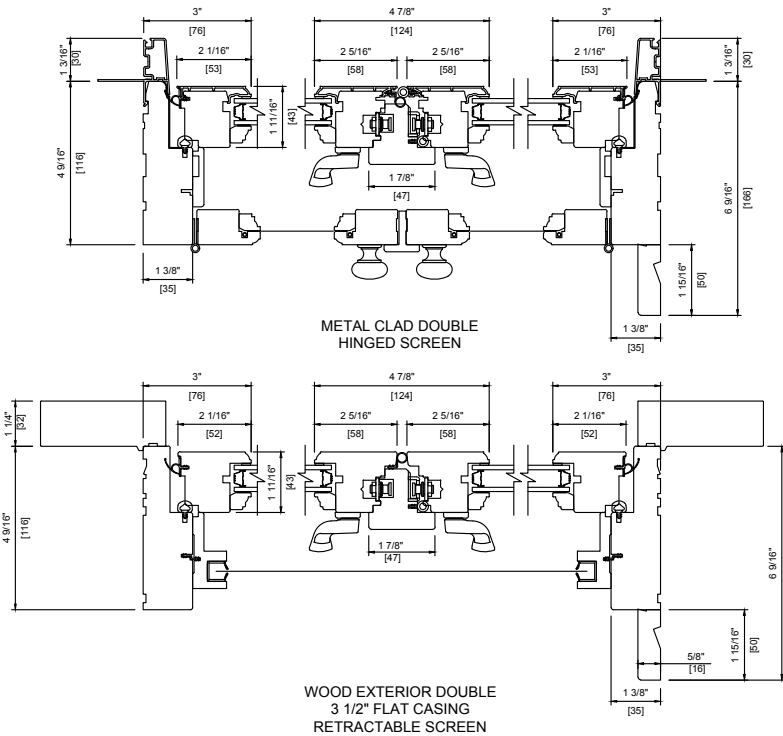


SQUARE



PUTTY

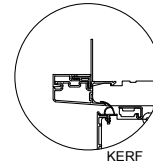
## Plan View



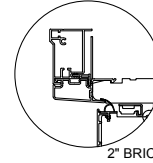
METAL CLAD DOUBLE  
HINGED SCREEN

WOOD EXTERIOR DOUBLE  
3 1/2" FLAT CASING  
RETRACTABLE SCREEN

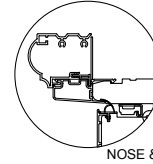
## Casing



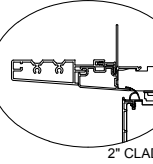
KERF



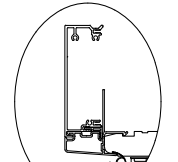
2" BRICKMOULD



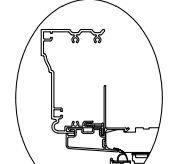
NOSE & COVE



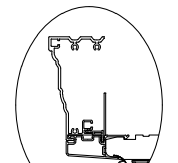
2" CLAD FRAME  
EXTENSION



3 1/2" FLAT



WILLIAMSBERG



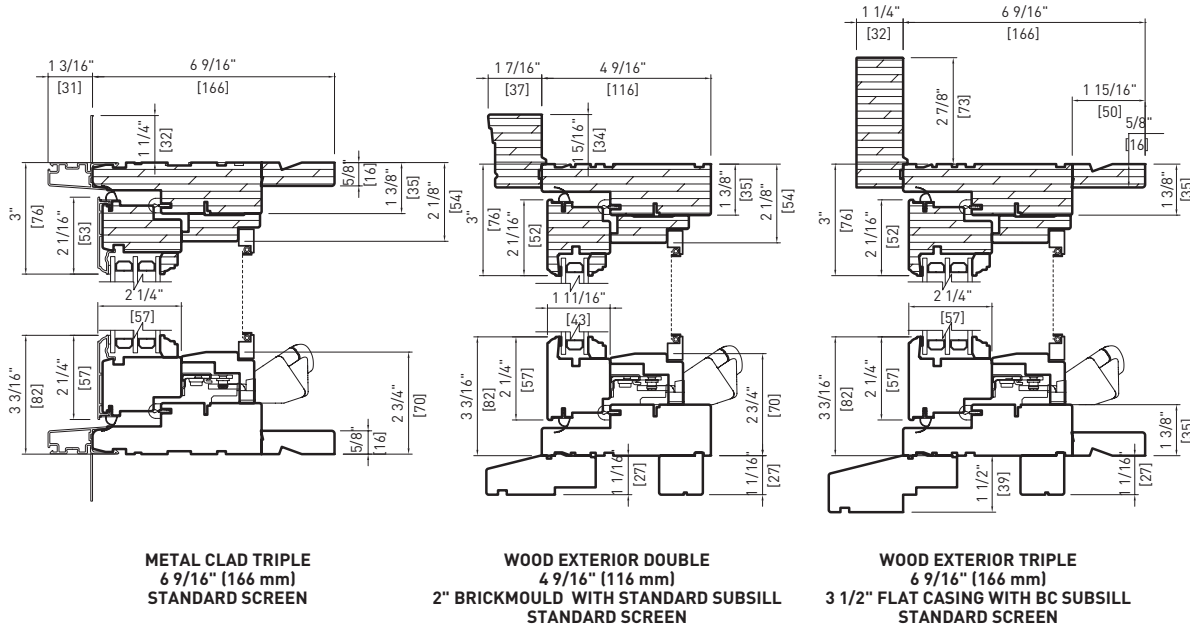
ADAMS

SEE SECTION A.

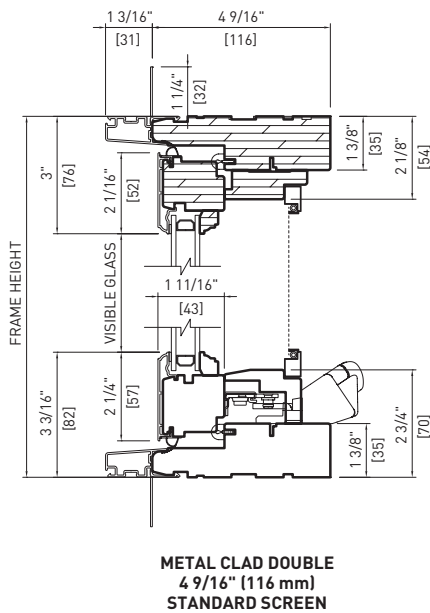
Note: • Other jamb widths available.  
• All dimensions to have +/- 1/16" (2mm) tolerance.

# Radius Top Casement Window Detail

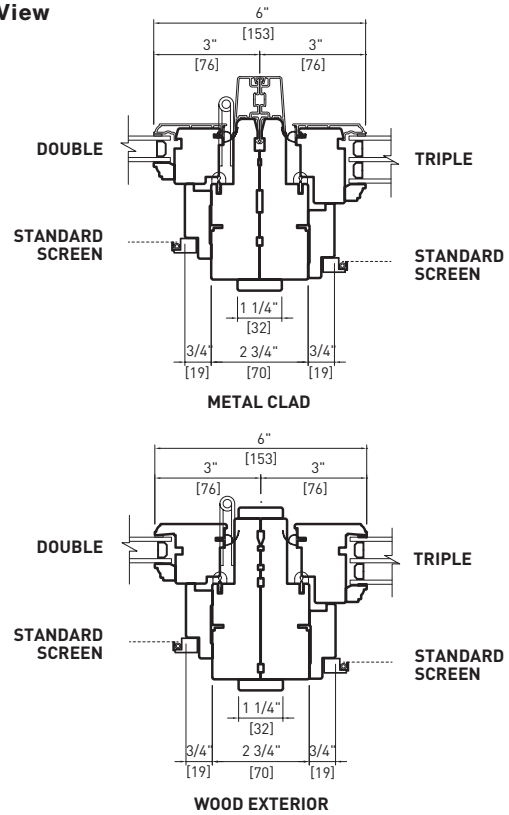
## Head & Sill Detail



## Head & Sill Detail



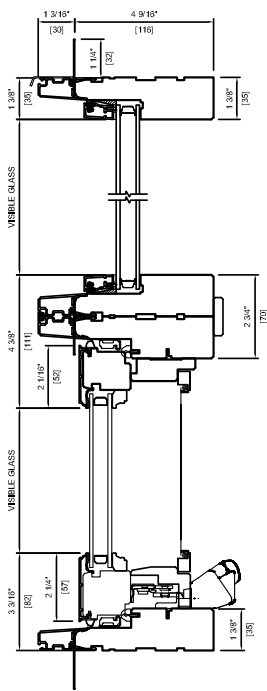
## Plan View



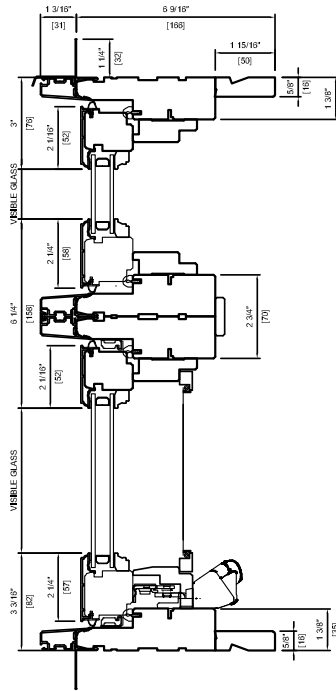
Note: • Other jamb widths available.  
• All dimensions to have +/- 1/16" (2mm) tolerance.

# Picture And Fixed Casement Window Transoms Detail

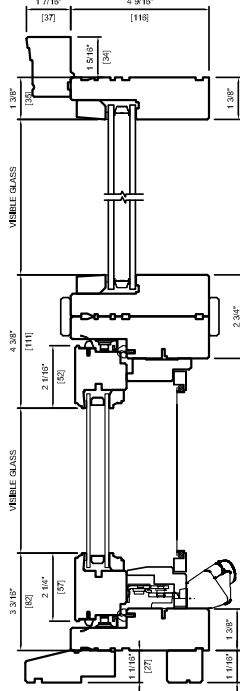
## Head & Sill Detail



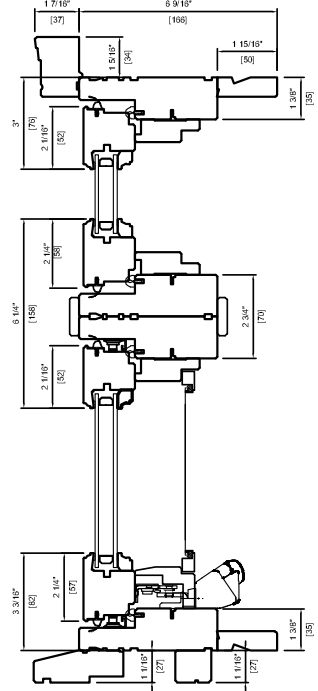
METAL CLAD  
PICTURE TRANSOM



METAL CLAD  
CASEMENT TRANSOM



WOOD EXTERIOR  
PICTURE TRANSOM



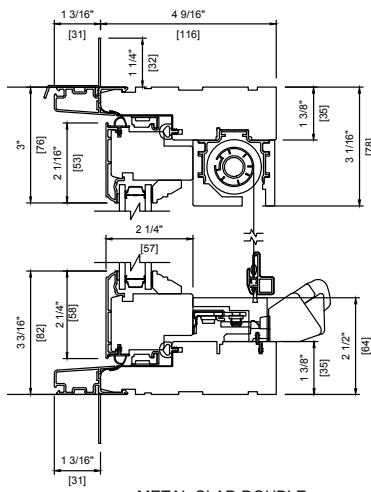
WOOD EXTERIOR  
FIXED CASEMENT TRANSOM

**Note:**

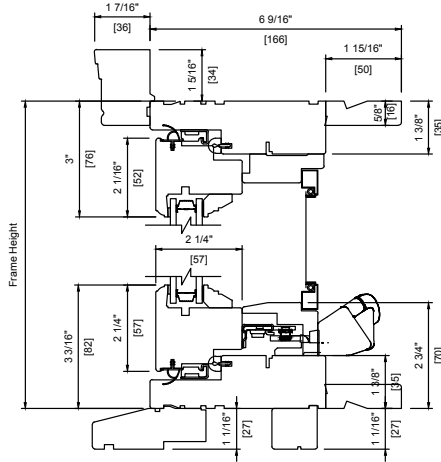
- Other jamb widths available.
- All dimensions to have +/- 1/16" (2mm) tolerance.

# Oversized Casement Window (Roto Gear Only) Detail

## Head & Sill Detail

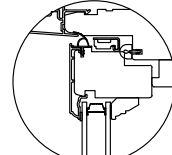


METAL CLAD DOUBLE  
4 9/16" (116 mm)  
RETRACTABLE SCREEN

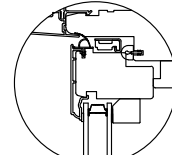


WOOD EXTERIOR DOUBLE  
6 9/16" (166 mm)  
2" BRICKMOULD STANDARD SUBSILL  
STANDARD SCREEN

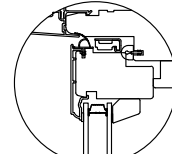
## Glazing Stop Profiles



OGEE

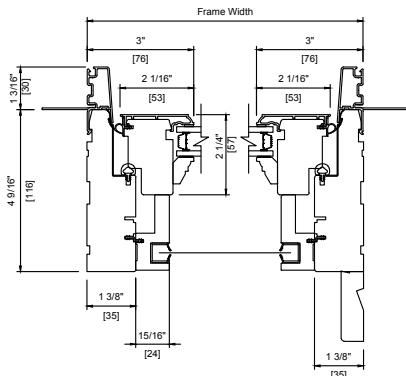


SQUARE

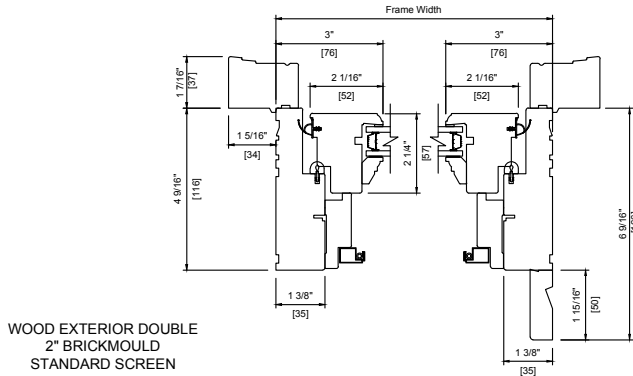


PUTTY

## Plan View

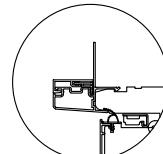


METAL CLAD DOUBLE  
RETRACTABLE SCREEN

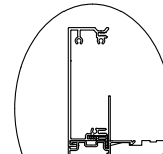


WOOD EXTERIOR DOUBLE  
2" BRICKMOULD  
STANDARD SCREEN

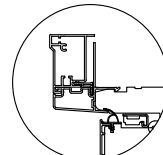
## Casing



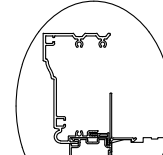
KERF



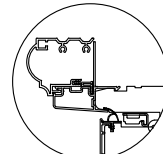
3/4" FLAT



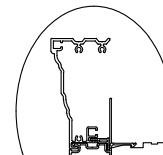
2" BRICKMOULD



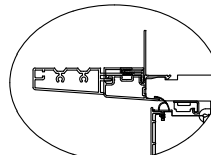
WILLIAMSBERG



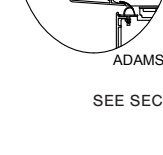
NOSE & COVE



ADAMS



2" CLAD FRAME  
EXTENSION



SEE SECTION A.

**Note:** • Other jamb widths available.  
• All dimensions to have +/- 1/16" (2mm) tolerance.

