



BIFOLD DOOR FIELD SPLICING GUIDE

Addendum Guide

IMPORTANT NOTICES & INFORMATION

The building envelope must be correctly prepared with weather resistant barriers – that meet local and state codes. All frame and sill surfaces must be correctly prepared for air, water, and structural integrity by the builder or contractor before attempting installation. In order to meet warranty requirements, all systems are required to be installed by a certified installer.

- Read these instructions in their entirety prior to installing windows. Contact Loewen at 1.800.563.9367 for clarification.
- Loewen is not responsible for site measurements nor the structural and architectural requirements for the installation of the patio doors.
- Building design, construction methods, building materials and site conditions unique to your project may require methods different from these instructions.
- Choosing the appropriate method is the responsibility of you, your architect, or your construction professional.
- Confirm with sealant/foam/barrier manufacturers that all materials used are compatible with one another.
- Remove shipping blocks and related staples prior to installation.
- All drawings are shown not to scale.
- To ensure accuracy, make sure you have the latest approved shop drawings and assembly and installation guides.
- Any local, regional or national building code requirements supersede these instructions.
- Safety is top priority for Loewen. Use proper work procedures and protective equipment.

Notes on Building Envelopes

Improper design and/or non-conforming application of building envelope materials has been demonstrated to cause premature building envelope failure. Even with premium materials, shortcuts and errors in the final installation can impact budgets, time frames, building life span, and increase legal liabilities.

As one of the elements that bisect the interior/exterior plane, window and door integrations are a critical element of the building envelope as a whole. Poor installations can carry significant liability, due to building envelope failure.

Finishing Requirements

Metal Clad:

- Interior - within 14 days of installation.
- All door panels - Interior - immediately upon installation.

Non-clad:

- Exterior - immediately upon installation.
- Interior - within 14 days of installation.
- All door panels - Interior and Exterior - immediately upon installation.

Factory primed:

- Exterior - within 14 days of installation.
- Interior - within 14 days of installation.
- All door panels - Interior and Exterior - immediately upon installation.

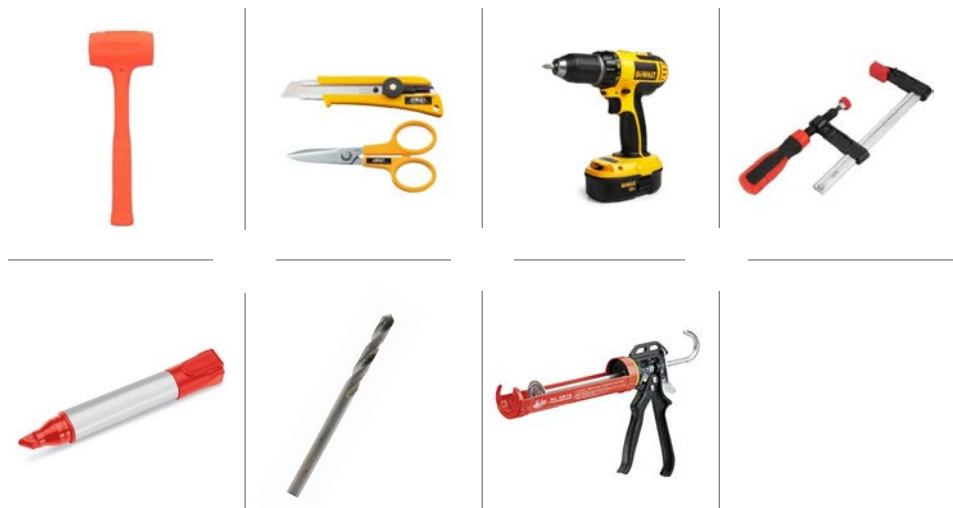
See Loewen warranty and finishing guidelines at www.loewen.com

TABLE OF CONTENTS

Items Provided for Frame Splicing	4
Section 1: Splicing Sill Nosing	5
Section 2: Attaching Wood Components to Sill Nosing	10
Section 3: Splicing Bifold Head	12
Section 4: Installing Head Weatherstrip Block	16

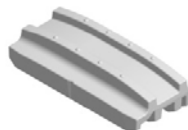
TOOLS REQUIRED

- Deadblow Hammer
- Scissors or Utility Knife
- Drill
- F Clamp
- Marker
- 1/8" Drill Bit
- Caulk Gun



ITEMS PROVIDED FOR FRAME SPLICING

- Sill Nose Splicing Plug
- Bostik PRO-MS 50 Sealant Tube
- Qty varies - #6 x 1/2" Screws
- #8 x 2 - 1/2" Screw
- 2 x Steel Plate
- Flange Plate
- Qty 2 - #8 x 2" Screw
- Qty 12 - #8 x 1/2" Screw
- Rubberized Asphalt Flashing Tape
- Frame Cladding Splicing Key
- Dymonic FC Buff Sealant Tube
- Qty 8 - #8 x 3/4" Screw
- 2 lengths - Qlon weatherstrip



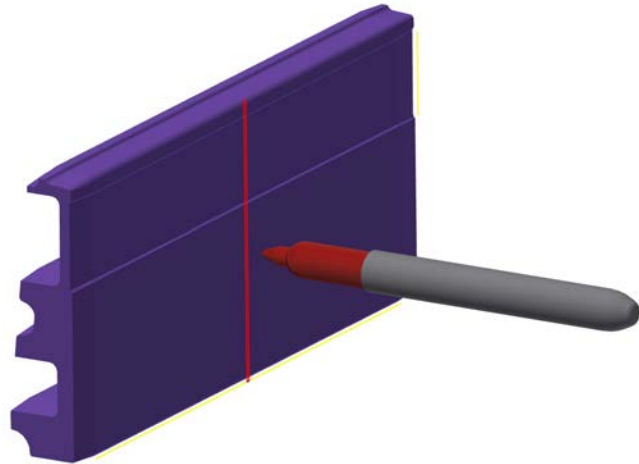
SPLICING INSTRUCTIONS

Section 1: Splicing Sill Nosing

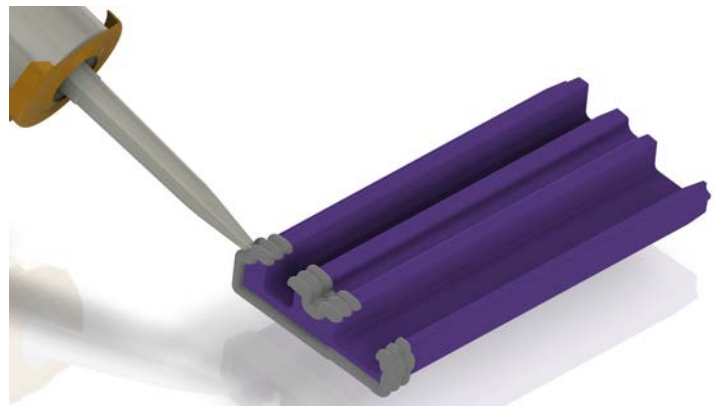
1. Apply Bostik PRO-MS 50 Sealant to inner cavity of Sill Nosing.



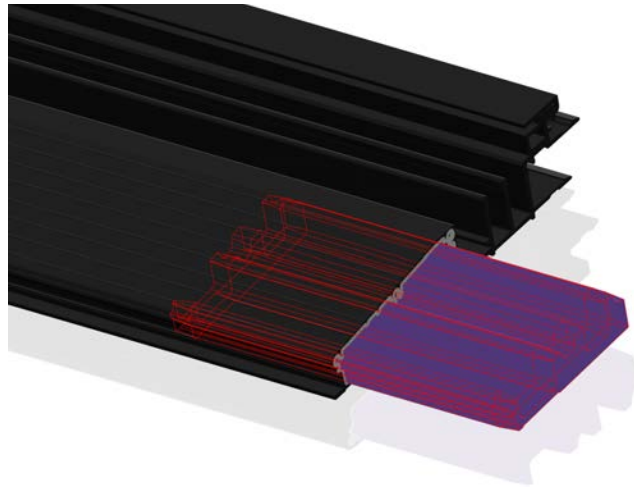
2. Mark the center line of the Splicing Plug.



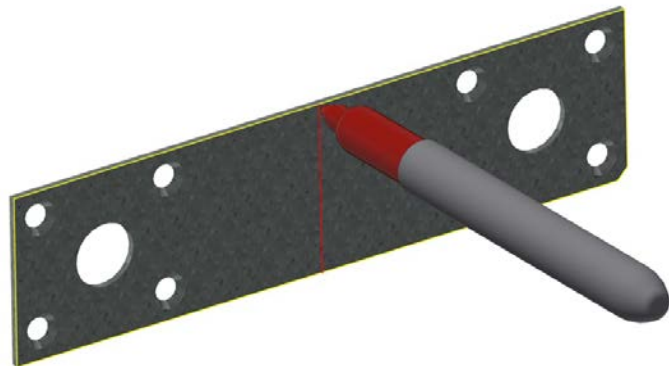
3. Apply Bostik PRO-MS 50 Sealant to one side of the splicing plug



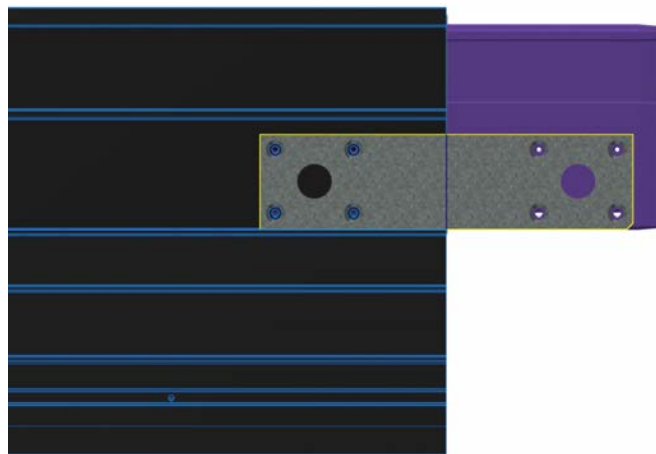
4. Insert Splicing Plug into Sill Nose cavity as shown. The fit of the plug should be tight. If the plug cannot be inserted by hand, use a rubber mallet. Use the marked line to determine when half of the plug's length is inserted.



5. Mark a line to indicate the center line of the steel plate.



6. Flip the sill with the bottom facing up onto a flat and stable surface. Place and secure the steel plate such that the marked line aligns with edge of the sill nose.
7. Using a 1/8" drill bit, drill 4 pilot holes through the sill and into the Splicing Plug. Drill the holes 3/4" deep.

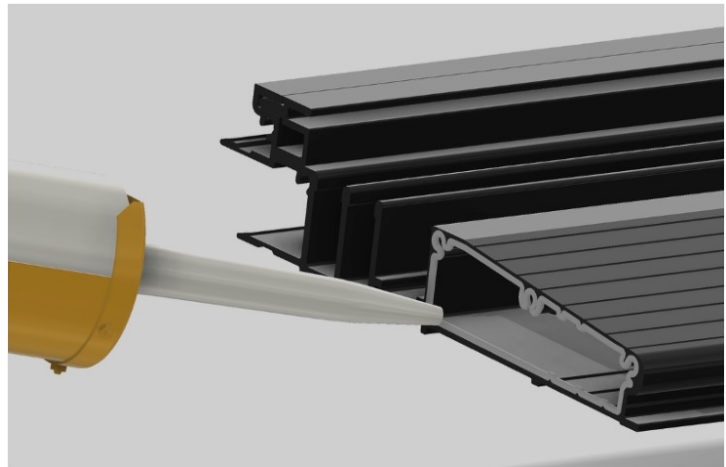


WARNING!! DO NOT drill deeper than 7/8" as you may penetrate through the top of the sill.

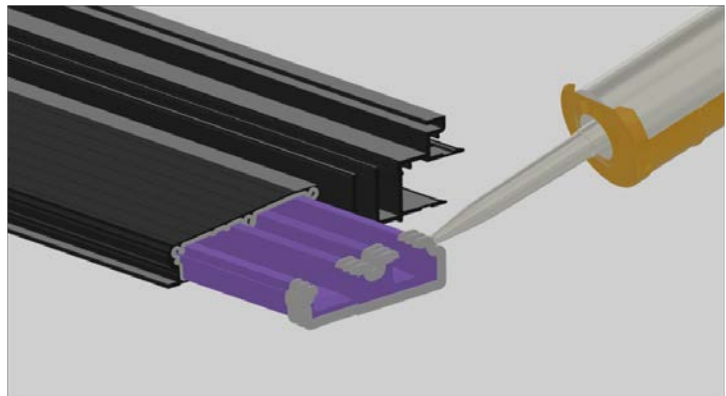
8. Inject Dymonic FC sealant into each of the screw holes.
9. Secure Splicing Plug and Steel Plate with 4 of 8 provided #8 x 3/4" screws.



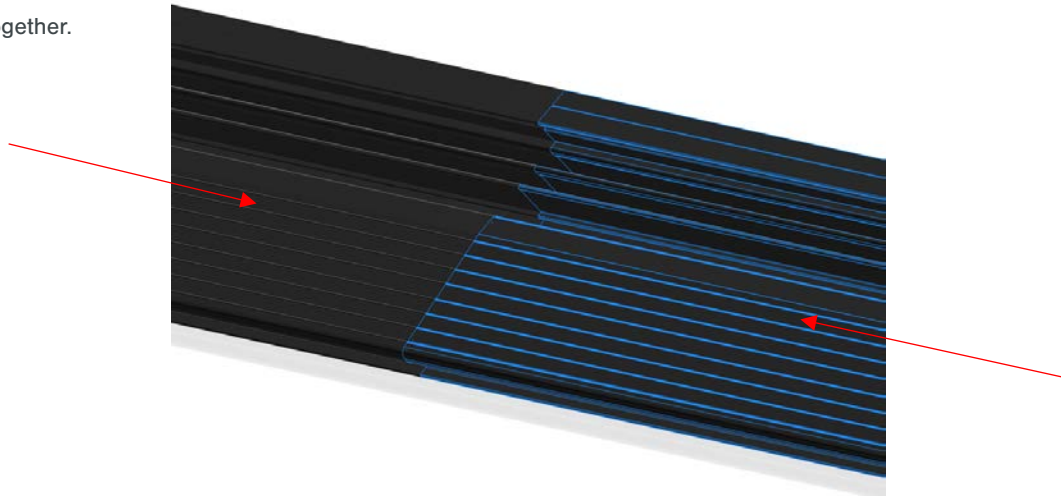
10. Repeat step 1 for second Sill Nose Length.



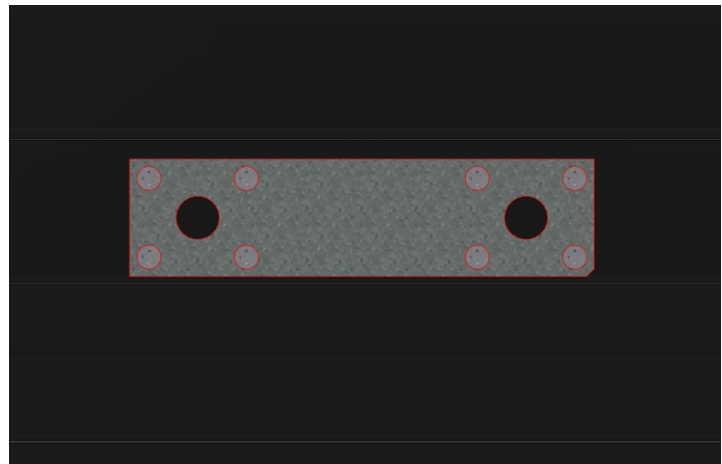
11. Apply Bostik Sealant to the other end of Splicing Plug



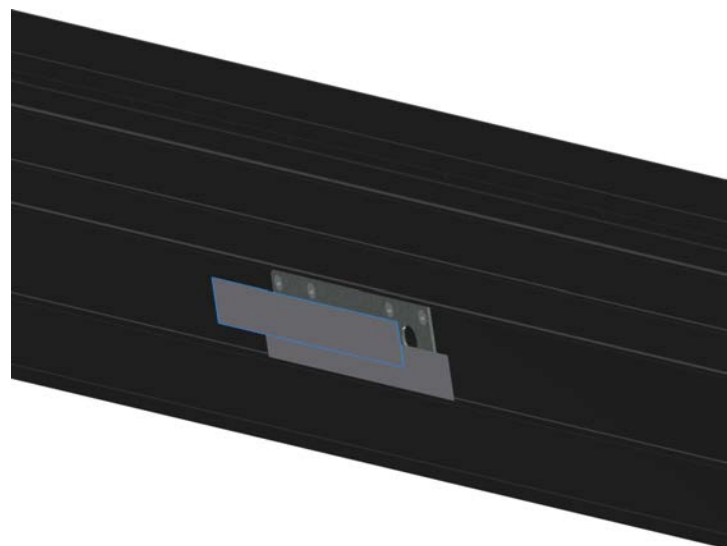
12. Push both Sill Nose lengths together.
Wipe off any excess sealant.



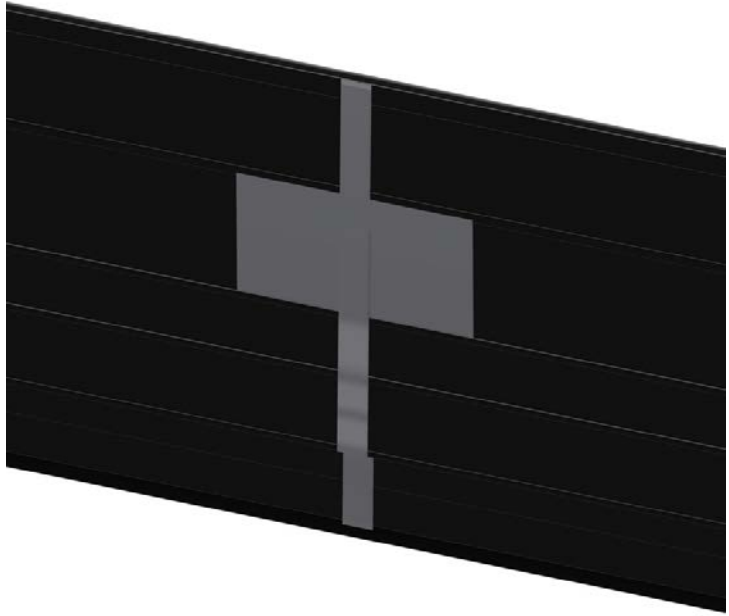
13. Drill the remaining four pilot holes using the steel plate as a guide. Inject Dymonic FC into each of the holes.
14. Install the remaining four #8 x 3/4" screws.



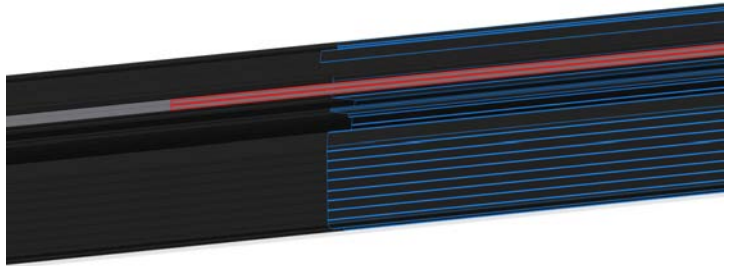
15. Apply 2 strips of rubberized flashing tape over steel plate. Apply pressure to flashing tape.



16. Apply 1 strip of rubberized flashing tape over seam. Apply pressure onto flashing tape to secure to bottom of sill.



17. It is recommended to offset the track filler strip if possible.



Section 2: Attaching Wood Components to Sill Nosing

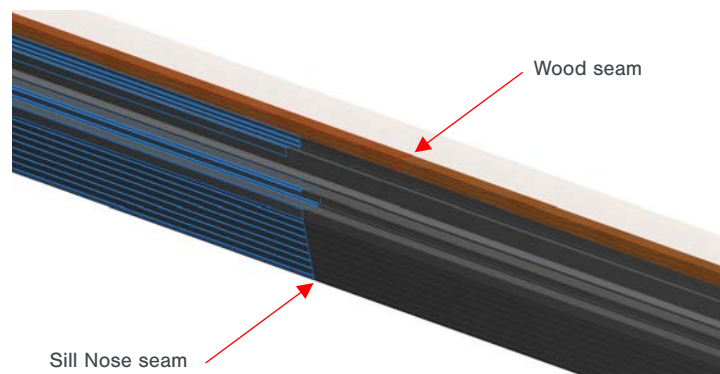
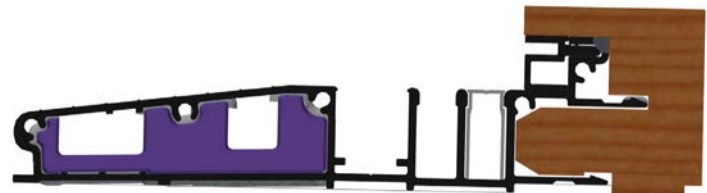
1. Apply Dymonic FC along the length of the upper sill cover as shown. Mark the center line of the Splicing Plug.



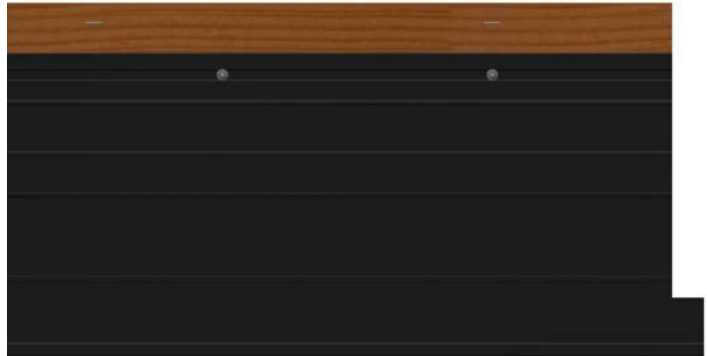
2. Apply Dymonic FC along the length of the groove between the upper sill cover and the lower sill base.



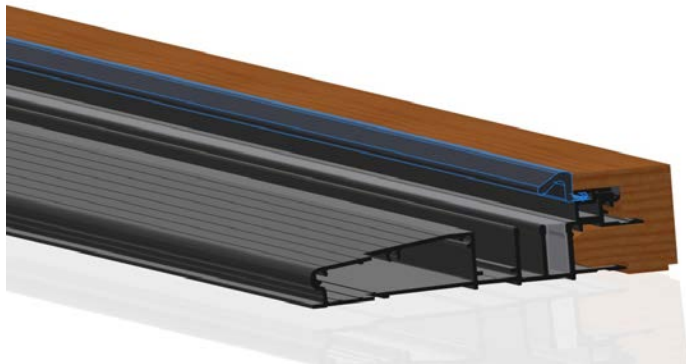
3. Insert wood sill bases into the rear of the sill nose. Again, it is recommended to offset the wood components from the metal sill nosing such that there is no continuous seam.



4. Flip the sill over. Install #6 x 1/2" screws 4" from each end and every 6" in-between into the sill nosing and through the wood sill base.

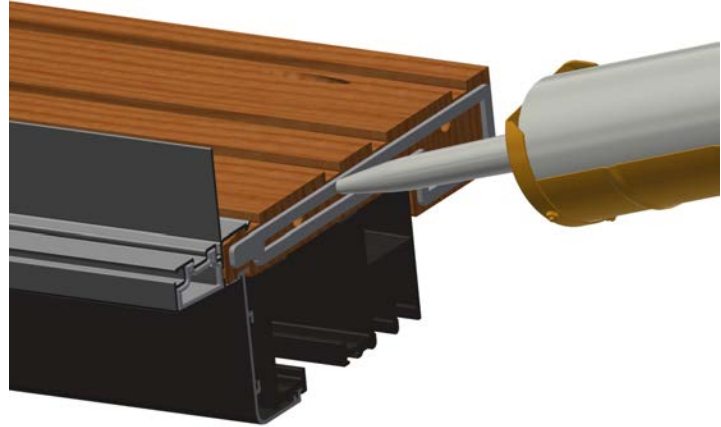


5. Install weatherstrip into sill by hand. Cut weatherstrip to length of wood parts.

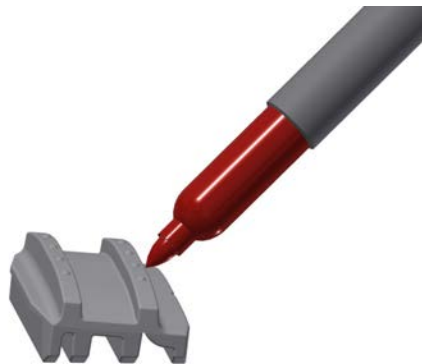


Section 3: Splicing Bifold Head

1. Apply 10 mm bead of Dymonic FC to one end of frame. Apply Bostik PRO-MS 50 Sealant in frame cladding cavity.



2. Mark centre line of Frame Cladding Splicing Key.



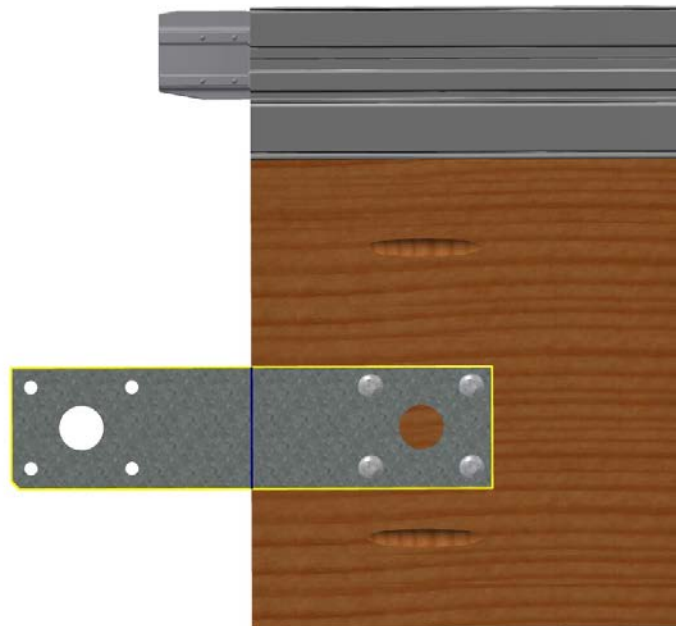
3. Insert Frame Cladding Splicing Key into frame cladding until half of the key is inside. The fit of the Splicing Key should be tight. Use a rubber mallet if necessary.



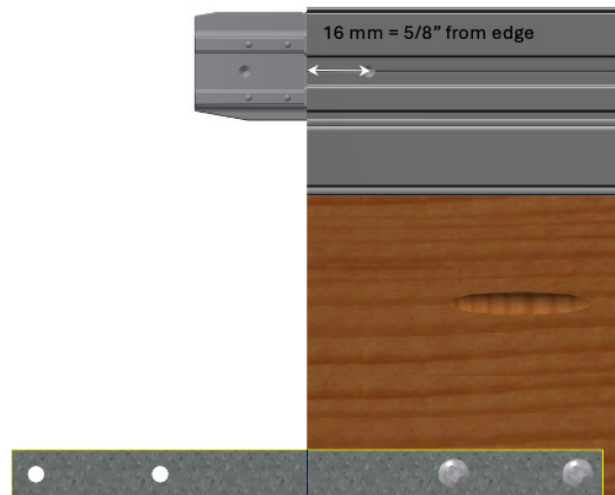
4. Apply Bostik PRO-MS 50 sealant into the frame cladding cavity of the opposing head assembly.



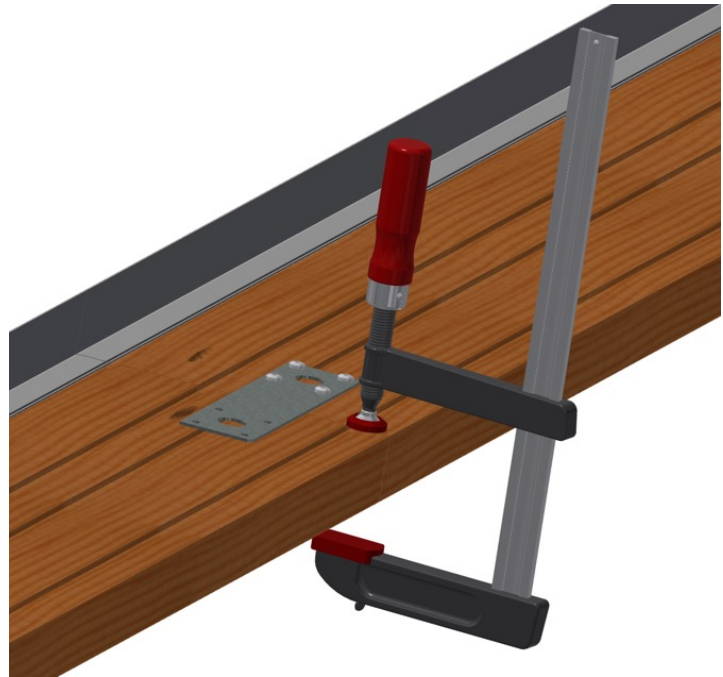
5. Mark centre line of steel plate. Place steel plate in center of splice joint. Using a 1/8" drill bit, drill four pilot holes 1/2" deep using the plate as a template.
6. Install 4 of 8 provided #8x 1/2" screws.



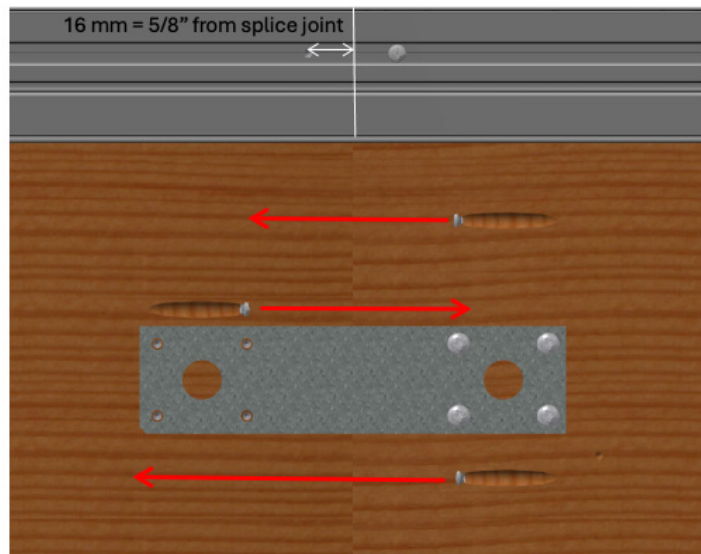
7. Using a 1/8" drill bit, drill a 1/4" deep hole through the frame cladding and into the splicing key. Hole location is 5/8" from the edge in location shown. Fasten splicing key to frame cladding with provided #6 x 1/2" screw.



8. Join both head pieces together.
Clamp splice joint to keep flush.



9. Fasten splice together with provided #8 x 2" screws in the 2 holes closest to the exterior and #8 x 2 - 1/2" screw in the hole closest to the interior.
10. Using a 1/8" drill bit and the steel plate as a template, drill the remaining 4 pilot holes and secure plate to head with #8 x 1/2" screws.
11. Using a 1/8" drill bit, drill a 1/4" deep hole through the frame cladding and into the splicing key in location shown. Secure splicing key to frame cladding with provided #6 x 1/2" screw.



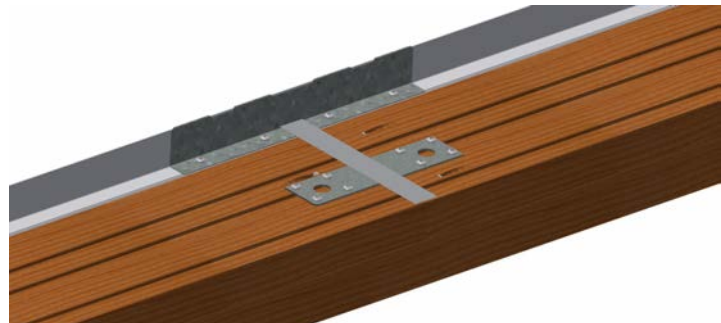
12. Wipe off any excess sealant between the frame joint.
13. Apply 5 mm bead of Bostik PRO-MS 50 Sealant to back of nailing flange where flange plate will be installed.



14. Attach flange plate in center of splice joint. Secure to cladding with provided #8 x 1/2" screws.
15. Wipe off any excess sealant.

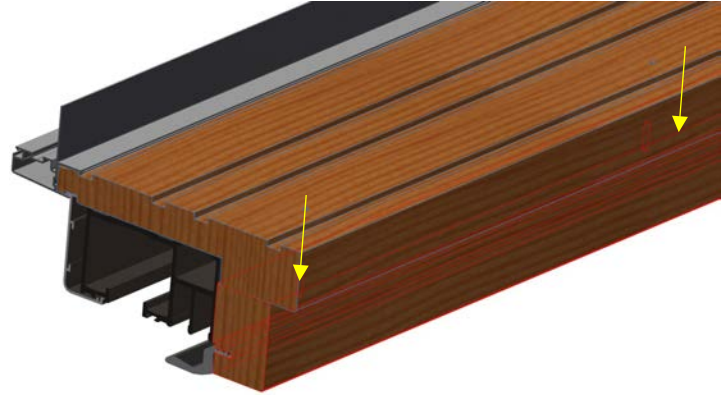


16. Apply strip of rubberized flashing tape to seam of splice joint as shown. Secure flashing tape by applying downwards pressure along splice joint.

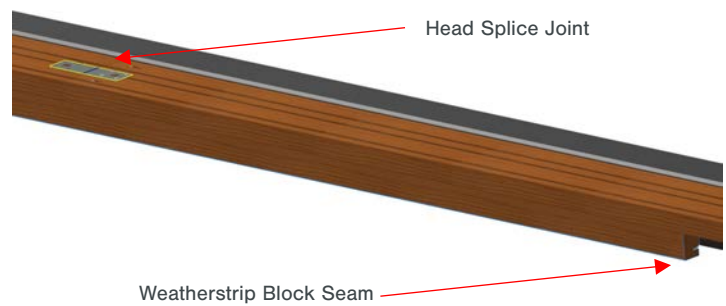


Section 4: Installing Head Weatherstrip Block

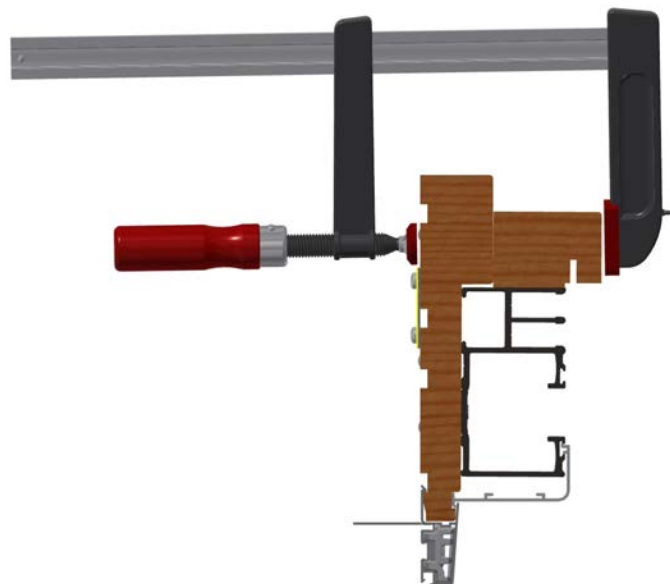
1. The Head and head weatherstrip block are pre-drilled. Ensure that the holes line up accordingly.



2. Note that the weatherstrip block seam is offset from the splice joint of head.



3. Clamp Head Weatherstrip block to head as shown. Make sure block is flush with side of head.



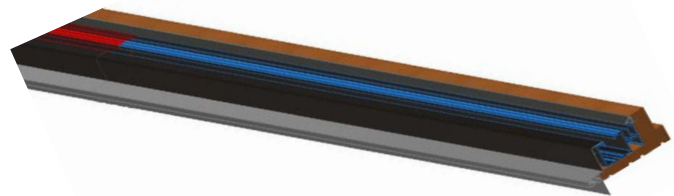
4. Install provided #8 x 2 – 1/2” screws in pre-drilled locations on head. Repeat steps for second weatherstrip block.



5. Install weatherstrip into head weatherstrip block by hand. Cut weatherstrip such that it is 15 mm longer than the block.
6. Cut the weatherstrip at a 45 degree angle as shown.



7. Ensure head tracks are flush and there is no noticeable vertical stepping when transitioning from one track to the next. This step should be performed after anchor screws are installed through to the rough opening as outlined in the Loewen Bifold Door Assembly Guide.



Information subject to change without notice.

Distributed by Loewen Inc. in the USA and C.P. Loewen Enterprises Ltd. in Canada and internationally. Trade Marks owned by C.P. Loewen Enterprises Ltd. Used under license.
© C.P. Loewen Enterprises Ltd. All rights reserved

P1015A - 0226

The Loewen logo is presented in a white, elegant script font, centered within a solid red rectangular box.

LOEWEN.COM